



# PAKISTAN NOTICES TO MARINERS

## WEEKLY EDITION 28

Notice: 95 – 96/22

16 JUL 2022

Copies of these Notices can be obtained gratis from Mercantile Marine Department and PN Chart Depot / NAVAREA IX Headquarters, 11 Liaquat Barracks Karachi. The same can be downloaded from web: [hydrography.paknavy.gov.pk](http://hydrography.paknavy.gov.pk).

### CONTENTS

- I NOTICES TO MARINERS
- II REPRINTS OF RADIO NAVIGATIONAL WARNINGS
- III CORRECTIONS TO SAILING DIRECTIONS
- IV MARINE INFORMATION

Mariners are requested to inform the Hydrographic Department, Naval Headquarters, 11 Liaquat Barracks, Karachi, Pakistan, immediately on the discovery of new dangers, or suspected dangers to navigation and of changes or defects in aids to navigation noticed in NAVAREA IX and of shortcomings in PAK charts or publications.

Tel : + 92-21-48506151  
+ 92-21-48506152  
Fax : + 92-21-99201623  
+ 92-21-35867737

E-mail : [hydropk@paknavy.gov.pk](mailto:hydropk@paknavy.gov.pk)  
[hydrpk@gmail.com](mailto:hydrpk@gmail.com)

Web : [hydrography.paknavy.gov.pk](http://hydrography.paknavy.gov.pk).



**MUHAMMAD WASIM**  
Captain Pakistan Navy  
Hydrographer

**Hydrographic Department, Naval Headquarters, 11 Liaquat Barracks, Karachi 75530, PAKISTAN**



**PART – I**  
**NOTICES TO MARINERS**

**95/22 IRAN - Pilot boarding place. NM Blocks. Anchorage areas. Legends**

**BA Chart 11 (INT 7304) (Panel A, Jazireh-ye Khark to Ganaveh) [ previous update 669/20 ] WGS84 DATUM**

Insert	limit of anchorage area, pecked line, joining:	(a) 29° 31′.00N, 50° 30′.15E. (b) 29° 31′.00N, 50° 32′.30E. (c) 29° 28′.00N, 50° 32′.30E. (d) 29° 28′.00N, 50° 30′.15E. (a)-(d) above
	legend,  Genaveh, within:	
	limit of anchorage area, pecked line, joining:	(e) 29° 27′.00N, 50° 32′.30E. (f) 29° 27′.00N, 50° 35′.30E. (g) 29° 24′.99N, 50° 35′.30E. (h) 29° 24′.99N, 50° 32′.30E. (a)-(h) above
	legend,  Rig, within:	

**BA Chart 27 [ previous update 680/22 ] WGS84 DATUM**

Insert		28° 57′.00N, 50° 42′.48E.
	the accompanying block, centred on:	28° 58′.8N, 50° 43′.6E.
	limit of anchorage area, pecked line, joining:	(a) 29° 00′.50N, 50° 47′.00E. (b) 29° 02′.05N, 50° 48′.40E. (c) 29° 02′.00N, 50° 48′.50E. (d) 29° 00′.45N, 50° 47′.10E. (a)-(d) above
	legend,  Bushehr Inner, within:	
Delete	legend, INNER ANCHORAGE, centred on:	29° 01′.61N, 50° 48′.17E.

**BA Chart 2883 (INT 7260) [ previous update 2095/22 ] WGS84 DATUM**

Insert	the accompanying block, centred on:	27° 47′.9N, 51° 59′.0E.
--------	-------------------------------------	-------------------------

Source: Admiralty Notice to Mariners No. 2968/2022.

**96/22 OMAN - Light-float.**

**BA Chart 3785 [ previous update 5082/20 ] WGS84 DATUM**

Insert	 Mo(U)15s	19° 10′.0N, 57° 49′.6E.
--------	--	-------------------------

Source: Admiralty Notice to Mariners No. 2988/2022.

**PART – II**  
**RADIO NAVIGATIONAL WARNINGS**

**262/22. SOUTHERN GULF.** UAE. Charts BA 2443, 2837 and 2889. Seismic survey in progress till 17 Jul 22 in following areas:

Receiver Boundary  
24-56.35N 053-42.97E  
24-56.22N 053-50.04E  
24-51.10N 053-49.92E  
24-51.23N 053-42.86E

Source Boundary  
24-59.58N 053-43.24E  
24-59.47N 053-49.46E  
24-47.87N 053-49.20E  
24-47.98N 053-42.99E

Fishing, anchoring and diving operations are strictly prohibited. Mariners are advised to navigate with caution and maintain listening watch on channel 16/72. Cancel this message on 172359 UTC Jul 22.

**263/22. Northern Gulf.** Kuwait. Charts BA 1223, 2884 and 3773. Tunnelling boring machine will be towed on 112000 UTC Jul 22 by the vessels WCD Manama, Shaheen 3 and Knose 7 from 28-53.90N, 048-14.11E to 28-41.79N, 048-22.77E. Mariners are requested to navigate with caution, keep clear from the location and maintain a listening watch on VHF channel 16. Cancell this message on 122359 UTC Jul 22.

**264/22. Northern Gulf.** Kuwait. Charts BA 1223, 2884 and 3773. Bathymetric survey will be conducted by vessel apache-30 from 13 July 22 in area bounded by following coordinates:

29-09.143N 048-07.882E  
 29-09.235N 048-08.179E  
 29-08.519N 048-08.464E  
 29-08.386N 048-07.988E

Mariners are advised to navigate with caution

**265/22. Central Gulf.** Qatar. Charts BA 2523 and 3772. Rig Hakuryu-10 will be moved on 12 Jul 22 by Vessels Halul 70 Bourbon liberty- 304 and bourbon liberty-306 from position 25-57.400N, 051-40.300E to 26-32.131N, 051-58.206E. Wide berth requested. Cancel this message on 192359 July 2022

**266/22. Self Cancelling.** Cancel Navarea IX Warning 254 of 2022

**267/22. Self Cancelling.** Cancel Navarea IX Warning 247 of 2022

**268/22 SELF CANCELLING.** Navigational Warnings Inforce:

2021 series: 024, 086, 109, 223, 224, 292,336, 368, 397, 398, 399, 408, 445, 448, 490 AND 491  
 2022 series: 021, 027, 039, 067, 069, 080, 095, 101, 102, 109, 112, 133, 142, 144, 170, 172, 180, 185, 193, 194, 198, 207, 211, 218, 220, 226, 227, 231, 239, 243, 245, 246, 248, 249, 250, 257, 259, 262, 264 AND 265.

**COASTAL WARNING**

**070/22. SELF CANCELLING.** Navigational Warnings Inforce:

2020 Series: 143.  
 2021 Series: 095 and 136.  
 2022 Series: 024, 027, 053, 054, 060, 063, 065 and 067.

WPGs Inforced 2022: 22  
 WPGs Cancelled 2022: Nil

**PART – III**

**UPDATES TO ADMIRALTY SAILING DIRECTIONS**

**United Arab Emirates – Dubai – Deira Islands —  
 Directions; shoal; light buoys**

147

Paragraph 7.58 <sup>3</sup> including existing Section IV Notice  
 Week 02/22 *Replace by:*

- 3 Between a 12.9 m shoal and a foul patch (25°26'31N 55°14'98E), and a 19.1 m shoal patch lying 3½ miles NW, thence:  
 NW of Deira Islands (25°21'64N 55°13'81E) (7.3),  
 and:
- 4 NW of a shoal patch (25°22'65N 55°11'70E), marked by a light buoy (isolated danger) and situated within an area marked by light buoys (cardinal); vessels are advised to give this area a wide berth.

The track then leads to a position NW of Dubai Approach Light Buoy (safe water) (25°18'50N 55°10'00E).

*(Directions continue for Abu Dhabi at 7.142)*

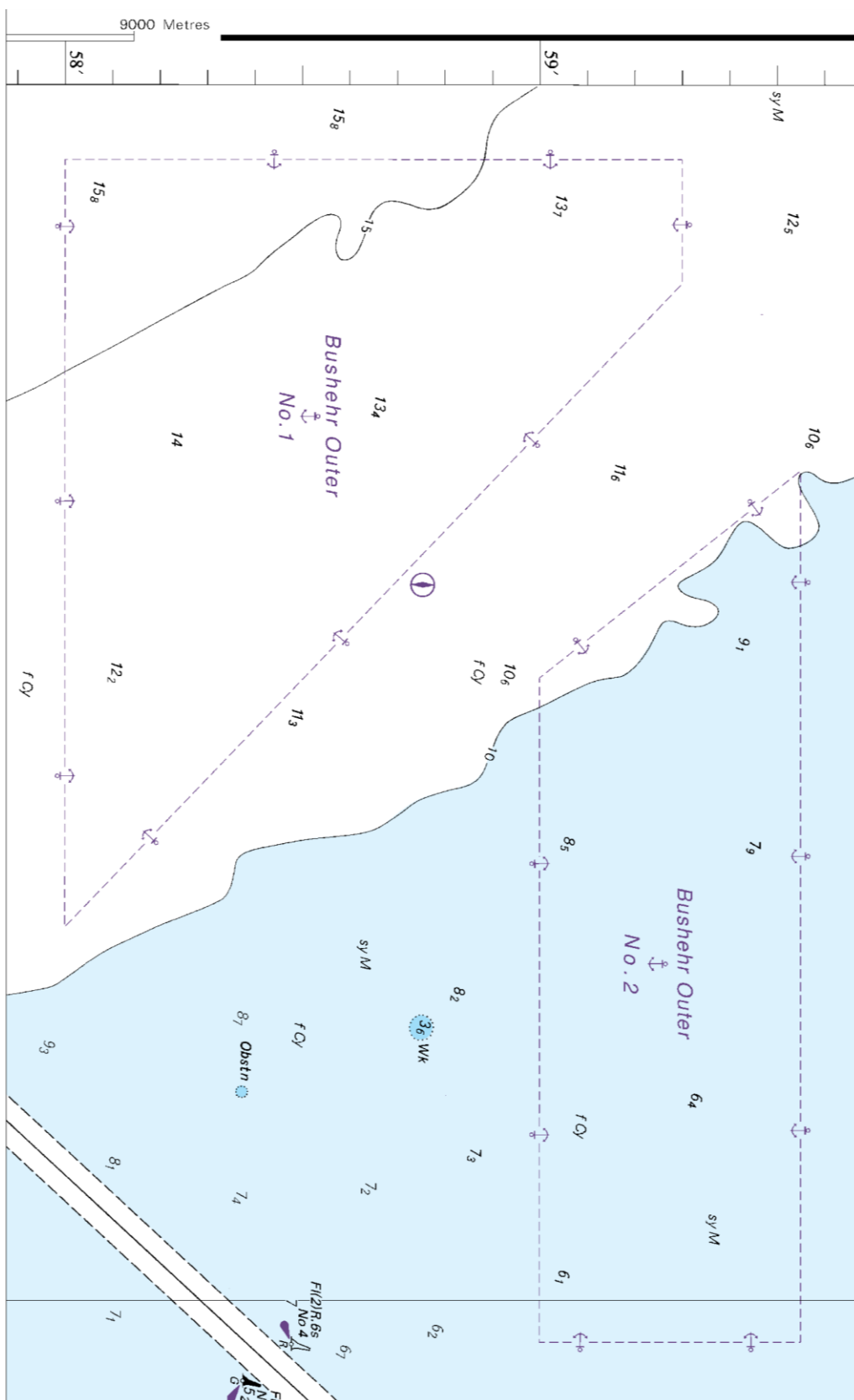
Corr. DMCA 28/01/22 [NP63-No 69-Wk 28/22]

**PART – IV**

**MARINE INFORMATION**

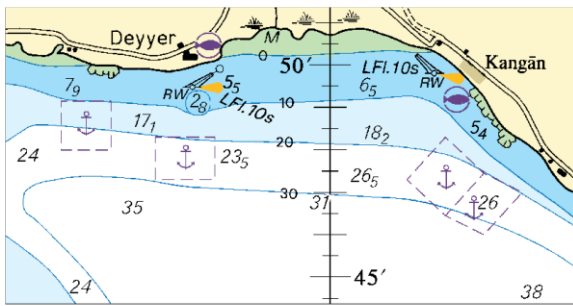
Nil

To accompany Pakistan Notice to Mariners 95/22



Block for BA Chart 27

To accompany Pakistan Notice to Mariners 95/22



Block for BA Chart No 2883

NP77, Vol D Edition 2022. Weekly Edition No. 28, Dated 14 July 2022.  
 Last Updates: Weekly Edition No. 26, dated 30 June 2022.

<b>D1524-51</b>	- Dique de Zierbena. Espigón	43 21-32 N	Q R 1s	10	1	Red round post	..
ES. I. 703-55	Central No 1. NW Corner	3 03-43 W			5		
*	*	*	*	*	*	*	*
<b>D1557-82</b>	NORTH COAST. PUERTO DE SANTANDER Remove from list; deleted						
<b>D1557-88</b>	NORTH COAST. PUERTO DE SANTANDER Remove from list; deleted						
<b>D2618-85</b>	Cap Juby (Tarfaya). Port de	27 56-18 N	FI(2)G 6s	5	3	..	<b>TE 2022</b>
FR. L2. 18240	Tarfaya. S Breakwater. Head	12 56-06 W					
ES. I. 13798		*					*
<b>D7658</b>	KHOWR-E MŪSĀ Remove from list; deleted						
<b>D7658-8</b>	- Khowr-e Māhshahr	30 27-45 N	Q G	..	7	Green beacon	..
	*	49 10-57 E	*		*	*	
<b>D7659-2</b>	Remove from list; renumbered to D7659.7						
<b>D7659-3</b>	- Khowr-e Māhshahr	30 27-58 N	Q G	..	7	Green beacon	..
	*	49 10-76 E	*		*	*	
<b>D7659-4</b>	KHOWR-E MŪSĀ Remove from list; deleted						
<b>D7659-5</b>	- Khowr-e Māhshahr	30 27-78 N	Q G	..	7	Green beacon	..
	*	49 11-10 E	*		*	*	
<b>D7659-6</b>	- Khowr-e Māhshahr	30 27-84 N	Q G	..	7	Green beacon	..
*	*	49 11-37 E	*	*	*	*	*
<b>D7659-7</b>	Renumbered; was previously D7659.2						
	- Khowr-e Māhshahr	30 27-99 N	Q G	..	7	Green beacon	..
*	*	49 11-38 E	*	*	*	*	*