



PAKISTAN NOTICES TO MARINERS

WEEKLY EDITION 26

Notice: 87 – 91(T)/22

02 JUL 2022

Copies of these Notices can be obtained gratis from Mercantile Marine Department and PN Chart Depot / NAVAREA IX Headquarters, 11 Liaquat Barracks Karachi. The same can be downloaded from web: hydrography.paknavy.gov.pk.

CONTENTS

- I NOTICES TO MARINERS
- II REPRINTS OF RADIO NAVIGATIONAL WARNINGS
- III CORRECTIONS TO SAILING DIRECTIONS
- IV MARINE INFORMATION

Mariners are requested to inform the Hydrographic Department, Naval Headquarters, 11 Liaquat Barracks, Karachi, Pakistan, immediately on the discovery of new dangers, or suspected dangers to navigation and of changes or defects in aids to navigation noticed in NAVAREA IX and of shortcomings in PAK charts or publications.

Tel : + 92-21-48506151
+ 92-21-48506152
Fax : + 92-21-99201623
+ 92-21-35867737

E-mail : hydropk@paknavy.gov.pk
hydrpk@gmail.com

Web : hydrography.paknavy.gov.pk.

MUHAMMAD WASIM
Captain Pakistan Navy
Hydrographer

Hydrographic Department, Naval Headquarters, 11 Liaquat Barracks, Karachi 75530, PAKISTAN

PART – I
NOTICES TO MARINERS

87*/22 UNITED ARAB EMIRATES - NM Block.

BA Chart 3171 [*previous update New Edition 25/11/2021*] WGS84 DATUM

Insert the accompanying block, centred on: 25° 38′.0N., 56° 18′.6E.

BA Chart 3520 (INT 7200) [*previous update 5282/21*] WGS84 DATUM

Insert the accompanying block, centred on: 25° 38′.0N., 56° 18′.4E.

Source: Admiralty Notice to Mariners No. 2703*/2022.

88/22 OMAN - Buoy.

BA Chart 3518 (Panel A, Muscat (Masqaṭ) to Mīnā’ al Faḥl) [*previous update 1641/22*] WGS84 Datum

Move symbol, yellow single buoy mooring, *Mo(U) Y.15s, No 4* from: 23° 38′.28N., 58° 31′.27E.
to: 23° 38′.50N., 58° 31′.26E.

BA Chart 3522 [*previous update 1049/21*] WGS84 Datum

Move symbol, single buoy mooring, *Mo(U) Y.15s, No 4* from: 23° 38′.28N., 58° 31′.27E.
to: 23° 38′.50N., 58° 31′.26E.

Source: Admiralty Notice to Mariners No. 2759/2022.

89/22 UNITED ARAB EMIRATES - NM Block. Lights. Buoyage.

BA Chart 3175 (INT 7212) [*previous update 2031/22*] WGS84 DATUM

Insert  Fl.G 25° 16′.98N., 55° 15′.46E.
 Fl.R 25° 16′.85N., 55° 15′.56E.
 Oc.R 25° 16′.33N., 55° 15′.40E.
Replace  with  *Mo(A)10s* 25° 16′.80N., 55° 14′.00E.

BA Chart 3176 (INT 7216) [*previous update 2031/22*] WGS84 DATUM

Insert  Fl.G 25° 16′.98N., 55° 15′.46E.
 Fl.R 25° 16′.85N., 55° 15′.56E.
 Oc.R 25° 16′.33N., 55° 15′.40E.
Replace  with  *Mo(A)10s* 25° 16′.80N., 55° 14′.00E.

BA Chart 3412 (INT 7219) [*previous update 2031/22*] WGS84 DATUM

Insert  Fl.G.3s 25° 16′.98N., 55° 15′.46E.
 Fl.R.3s 25° 16′.85N., 55° 15′.56E.
 Oc.R.4s5M 25° 16′.33N., 55° 15′.40E.
Amend light to, Fl.G.4s5M 25° 16′.19N., 55° 15′.02E.
Replace  with  *Mo(A)10s* 25° 16′.80N., 55° 14′.00E.

BA Chart 3414 (INT 7218) [*previous update New Edition 04/11/2021*] WGS84 DATUM

Insert the accompanying block, centred on: 25° 15′.6N., 55° 15′.3E.
 Fl.G.3s 25° 16′.978N., 55° 15′.459E.
 Fl.R.3s 25° 16′.854N., 55° 15′.558E.
Replace  with  *Mo(A)10s* 25° 16′.800N., 55° 14′.000E.

Source: Admiralty Notice to Mariners No. 2785*/2022.

90(T)/22 QATAR - Buoy.

1. The mooring buoy, *Mo(U)15s*, in position 26° 41'·01N., 51° 54'·39E. is reported to be unlit.
2. Mariners are advised to navigate with caution in the area.
(WGS84 DATUM)

BA Chart affected - 2523 (INT 7250)

Source: Admiralty Notice to Mariners No. 2717(T)/2022.

91(T)/22 UNITED ARAB EMIRATES - Buoy.

1. A Wave Rider buoy, *Fl(5)Y.20s*, has been temporarily established in position 24° 14'·21N., 52° 40'·33E.
2. Mariners are advised to navigate with caution in the area.
(WGS84 DATUM)

BA Charts affected - 3778 - 3780

Source: Admiralty Notice to Mariners No. 2739(T)/2022.

PART – II

RADIO NAVIGATIONAL WARNINGS

243/22. SOUTHERN GULF. Dubai (Mina Jebel Ali). Charts BA 2888, 2889, 3175, 3405, 3412 and 3414. Dubai dry docks approaches buoy in position 25-16.80N 055-14.00E reported unlit. Mariners are requested to navigate with caution.

244/22. SOUTHERN GULF. UAE. Charts BA 2443, 2837 and 2889. Seismic survey in progress till 03 Jul 22 in following areas:

Receiver Boundary
 24-56.49N 053-35.13E
 24-56.37N 053-41.85E
 24-51.27N 053-41.74E
 24-51.37N 053-35.03E

Source Boundary
 24-59.71N 053-35.25E
 24-59.59N 053-41.69E
 24-47.99N 053-41.44E
 24-48.13N 053-35.01E

Fishing, anchoring and diving operations are strictly prohibited. Mariners are advised to navigate with caution and maintain listening watch on channel 16/72. Cancel this message on 032359 Utc Jul 22.

245/22. SOUTHERN GULF. UAE. Charts BA 2444, 2886 and 3178. Jacket installation of well head tower ‘WHT-UAD’ in progress by Derrick Lay Barge-1000 in position 25-04.67N, 053-15.81E. Mariners are advised to navigate with caution and maintain listening watch on VHF channels 12/23 (Das Port Control/VTIS).

246/22. SOUTHERN GULF. UAE. Charts BA 2837, 2889, 3778 and 3780. Wave rider buoy temporarily deployed in position 24-14.40N 052-40.59E. Mariners are requested to navigate with caution. Cancel Navarea IX warning 199 of 2022.

247/22. SOUTHERN GULF. UAE. Charts BA 2889 and 2837. Geotechnical survey in progress by ‘Topaz Rayyan’ in area bounded by following positions:

- | | | |
|----|----------------------|------------|
| a. | 24-08.64N 052-33.74E | Shuweihat |
| b. | 24-11.37N 052-29.68E | |
| c. | 24-12.79N 052-29.17E | |
| d. | 24-17.73N 052-30.08E | |
| e. | 24-26.03N 052-22.88E | |
| f. | 24-32.16N 052-24.23E | |
| g. | 24-37.96N 052-36.10E | |
| h. | 24-45.80N 052-39.02E | |
| i. | 25-04.13N 052-51.49E | |
| j. | 25-06.97N 052-51.79E | |
| k. | 25-07.41N 052-52.52E | Das Island |

Vessel will be restricted in her ability to manoeuvre maintain 500m exclusion zone. Mariners cautioned.

248/22. SOUTHERN GULF. UAE. Charts BA 2837 and 2889. Navigation light of SPM-6 in position 25-08.14N 052-55.69E reported unlit. Mariners cautioned.

249/22. SOUTHERN GULF. UAE. Charts BA 2889, 3778 and 3780. Channel buoy GS-4 is reported missing in position 24-09.57N 052-45.80E. Mariners are requested to navigate with caution.

250/22. ARABIAN SEA. Pakistan. Charts PAK 33, 57 (INT 751), BA 38 and 707. Naval ships will carry out surface, anti aircraft and depth charge live firing practice between 0400 to 1700 UTC from 01, 04-08, 11-15, 18-22 and 25-29 Jul 22 in following areas:

- a.
24-19.00N 066-58.00E

24-00.00N 066-39.00E
 24-11.00N 066-27.00E
 24-24.30N 066-42.00E

b.

24-36.02N 063-15.03E
 24-36.02N 062-30.03E
 24-21.02N 062-30.03E
 24-21.02N 063-15.03E

c.

24-36.02N 062-30.03E
 24-36.02N 061-45.03E
 24-21.02N 061-45.03E
 24-21.02N 062-30.03E

d. Depth charge firing area

24-16.18N 066-20.50E
 24-22.00N 066-27.00E
 24-16.30N 066-33.00E
 24-10.30N 066-27.00E

Vessels are requested to keep clear of assigned danger area on above specified schedule. Cancel this message on 291800 UTC Jul 22.

251/22. CENTRAL GULF. Qatar. Charts BA 3781, 3772 and 2523. 02 submarine hoses will be towed by vessels ‘Venture’ and ‘Allianz Zeus’ from position 24-57.58N 051-35.62E to 26-34.68N 052-01.82E on 01 Jul 22. Mariners are requested to navigate with caution and give wide berth. Cancel this message on 032359 Jul 22.

252/22. SELF CANCELLING. Cancel Navarea IX warnings 492/21, 513/21 and 070/22. Warnings published in Admiralty NTM 14/22 and 21/22.

253/22 SELF CANCELLING. Navigational Warnings Inforce:

2021 series: 024, 086, 109, 223, 224, 292, 336, 368, 397, 398, 399, 408, 445, 448, 490 and 491.
 2022 series: 021, 027, 039, 067, 069, 080, 095, 101, 102, 109, 112, 125, 133, 142, 144, 170, 172, 180, 185, 193, 194, 198, 207, 211, 218, 220, 226, 227, 228, 231, 239, 241, 243, 245, 246, 247, 248, 249, 250 and 251.

COASTAL WARNING

067/22. ARABIAN SEA. Pakistan. Charts PAK 33, 57 (INT 751), BA 38 and 707. Naval ships will carry out surface, anti aircraft and depth charge live firing practice between 0400 to 1700 UTC from 01, 04-08, 11-15, 18-22 and 25-29 Jul 22 in following areas:

a.

24-19.00N 066-58.00E
 24-00.00N 066-39.00E
 24-11.00N 066-27.00E
 24-24.30N 066-42.00E

b.

24-36.02N 063-15.03E
 24-36.02N 062-30.03E
 24-21.02N 062-30.03E
 24-21.02N 063-15.03E

c.

24-36.02N 062-30.03E
 24-36.02N 061-45.03E
 24-21.02N 061-45.03E
 24-21.02N 062-30.03E

d. Depth charge firing area

24-16.18N 066-20.50E
 24-22.00N 066-27.00E
 24-16.30N 066-33.00E
 24-10.30N 066-27.00E

Vessels are requested to keep clear of assigned danger area on above specified schedule. Cancel this message on 291800 UTC Jul 22.

068/22. SELF CANCELLING. Navigational Warnings Inforce:

2020 Series: 143.
 2021 Series: 095 and 136.
 2022 Series: 024, 027, 053, 054, 060, 063, 065 and 067.

WPGs Inforced 2022: 22
 WPGs Cancelled 2022: 19

TEMPORARY AND PRELIMINARY NOTICES

In Force 24 June 2022

(Former In Force List dated 20 May 2022 is cancelled)

Inforce: 55(T)/13, 92(T)/13, 92(T)/14, 51(T)/16, 136(P)/16, 150(P)/16, 173(P)/16, 83(P)/17, 99(T)/17, 115(P)/17, 129(P)/17, 140(T)/17, 169(T)/17, 176(T)/17, 184(P)/17, 57(T)/18, 101(T)/18, 131(P)/18, 27(P)/19, 55(P)/19, 65(P)/19, 73(T)/19, 78(T)/19, 108(P)/19, 110(P)/19, 112(P)/19, 173(T)/19, 229(T)/19, 234(P)/19, 04(P)/20, 58(T)/20, 65(T)/20, 87(T)/20, 95(P)/20, 111(P)/20, 134(P)/20, 139(P)/20, 140(P)/20, 160(T)/20, 176(P)/20, 04(T)/21, 06(T)/21, 15(T)/21, 42(P)/21, 46(T)/21, 69(T)/21, 98(P)/21, 109(P)/21, 110(T)/21, 111(T)/21, 122(P)/21, 124(T)/21, 137(P)/21, 143(T)/21, 144(P)/21, 145(P)/21, 156(T)/21, 158(T)/21, 15(P)/22, 16(P)/22, 17(P)/22, 20(P)/22, 25(T)/22, 26(P)/22, 29(T)/22, 37(P)/22, 38(P)/22, 39(T)/22, 45(P)/22, 48(P)/22, 51(P)/22, 56(P)/22, 74(P)/22, 75(T)/22, 76(P)/22, 77(T)/22, 79(T)/22, 82(T)/22, 85(P)/22, 86(P)/22, 90(T)/22 and 91(T)/22.

Cancelled: 213(T)/19 and 56(P)/21.

PART – III

UPDATES TO ADMIRALTY SAILING DIRECTIONS

In force 30 June 2022

<i>NP no</i>	<i>Page(s)</i>	<i>Title</i>	<i>Weekly Edition</i>
NP38	West Coast of India	19th Edition (2019)	49/19
	4	West coast of India -- Navigational dangers and hazards - Piracy and armed robbery	18/22
	6	West coast of India -- Radio facilities — Jamming, spoofing and cyber--attacks	18/22
	93	Maldives -- Male' Atoll -- Male' — Anchorages	17/20
	108	India -- West coast -- Lakshadweep Sea -- Nine Degree Channel — TSS	45/20
	134	India -- South--east coast -- Palk Bay -- Pamban Pass — Directions; buoyage	10/20
	138	Sri Lanka -- Galle Harbour — Traffic regulations; prohibited area	22/20
	141	Sri Lanka -- Galle to Hikkaduwa Point — Directions; prohibited area	22/20
	151	India -- South--east coast -- Palk Bay -- Pamban Pass — Directions; depths	10/20
	152	India -- South--east coast -- Palk Bay -- Pamban Pass — Directions; depths	10/20
	153	India -- South coast -- Gulf of Mannar -- Kuthenkuli — Directions; light	10/21
	155	India -- Gulf of Mannar -- Tuticorin — Anchorage; pilotage	05/21
	156	India -- Tuticorin — Directions; leading lights	50/21
	156	India -- Tuticorin — Berths	50/21
	165	India -- West coast -- Kollam to Kochi — TSS	37/20
	166	India -- West coast -- Kollam to Kochi — Directions; light	25/22
	166	India -- West coast -- Kollam to Kochi — Directions	37/20
	169	India -- West coast -- Kochi — Arrival information; prohibited areas	13/22
	176	India -- West coast -- Badagara — Wrecks	49/19
	177	India -- West coast -- Badagara — Anchorage	49/19
	177	India -- West coast -- Badagara to Mount Dilli — Directions; wrecks	08/20
	184	India -- West coast -- New Mangalore — Wreck	49/19
	186	India -- West coast -- North--north--east of New Mangalore -- Mulki Rocks — Directions; caution	23/20
	186	India -- West coast -- New Mangalore to Malpe — Directions; wreck	08/20
	198	India -- Mormugao — Outer anchorages; depth; wreck	09/20
	198	India -- Mormugao Harbour and Bay — Pilotage	18/21
	205	India -- Terekhol River to Malvan Bay -- West--south--west of Vengurla Rocks — Directions; wreck	12/21
	213	India -- West coast -- JSW Jaigarh Port — Outer anchorages	01/21
	213	India -- Mirya Head to Port Dabhol -- JSW Jaigarh Port — Pilotage	36/20
	214	India -- West coast -- South of Tolakeswar Point -- KLPL Terminal — Controlling depth	25/20
	214	India -- West coast -- South of Tolakeswar Point -- KLPL Terminal — Controlling depth	25/22

216	India -- Port Dabhol to Kumbaru Point — Directions; wreck	33/20
218	India -- Kumbara Point to Mumbai approaches — Directions; light sector	50/21
225	India -- West coast -- Mumbai — Anchorage	35/20
227	India -- Mumbai -- Jawaharlal Nehru Port — Regulations	14/20
232	India -- Mumbai Approaches to Tarapur Point — Directions; wreck	35/21
232	India -- North--west coast -- Mumbai Approaches to Taraur Point — Directions; wreck	27/21
234	India -- West coast -- Approaches to Gulf of Khambhat -- Southerland Channel — Light	49/19
236	India -- West coast -- Approaches to Gulf of Khambhat -- Southerland Channel — Light	49/19
239	India -- West coast -- Approaches to Gulf of Khambhat -- Valsad Bay—Light	49/19
245	India -- Port Pipavav -- West Channel — Pilotage	37/20
254	India -- West coast -- Mul Dwarka — Directions	26/21
263	India -- West coast -- Gulf of Katchh -- Mundra — Directions; major light	13/20
264	India -- West coast -- Gulf of Kachchh -- North of Kalubhar Tapu — Directions; wreck	51/20
264	India -- West coast -- Gulf of Kachchh — Directions; wreck	47/21
264	India -- West coast -- Gulf of Kachchh -- North of Humani Point — Directions; wreck	03/21
264	India -- West coast -- West part of Gulf of Kachachh — Directions; wrecks	12/21
269	India -- Gulf of Kachchh -- Salaya Harbour — Pilotage	18/21
270	India -- West Coast -- Gulf of Katchh -- Mundra — Directions; major light	13/20
271	India -- West coast -- Mundra Port — Development; tanker berth	24/21
272	India -- West Coast -- Gulf of Katchh -- Mundra — Directions; major light	13/20
273	India -- West Coast -- Gulf of Katchh -- Mundra — Directions; major light	13/20
274	India -- West coast -- Gulf of Kachchh -- V ^o dIn ^r Offshore Oil Terminal — Directions; wreck	47/21
277	India -- Gulf of Kachchh -- Approaches to Sikka -- Reliance Jamnagar Marine Terminal — Pilotage	37/20
277	India -- Gulf of Kachchh -- Sikka Creek — Directions; leading lights	38/21
279	India -- Kandla approaches and harbour — Outer anchorage; pilotage	41/20
298	Pakistan -- Sonmiani Bay — Terminals	39/21
299	Pakistan -- Ras Kachari to Astola Island -- Ormara — Directions; dangerous wreck	47/20
300	Pakistan -- Ormara -- East Bay — Directions; dangerous wreck	47/20
303	Pakistan -- Gwadar -- East Bay — Directions; shoal	40/20
303	Pakistan -- Gwadar — Directions; shoal depth	46/20

NP63 Persian Gulf

19th Edition (2021)

27/18

83	United Arab Emirates – Gulf of Oman – Ra’s Sallan to Fujairah — Directions; light	16/22
85	Oman -- Gulf of Oman -- North--north--west of Port Sohar -- Shinas — Anchorages	14/21
85	Oman -- Gulf of Oman -- Shinai — Anchorages	51/21
86	United Arab Emirates -- Gulf of Oman -- Port of Fujairah — Anchorage; speed restrictions	28/21
87	United Arab Emirates – Gulf of Oman – Port of Fujairah — Directions; light	16/22
97	Oman -- North coast -- Shamm Peninsula -- West of Hassa — Anchorage	14/21
103	Iran -- Gulf of Oman -- Khalij--e Chabahar -- Chabahar — Depths	04/22
107	Iran -- Jask — Directions; wreck; buoy	42/21
120	Iran -- Persian Gulf -- Jazireh--ye Hengam -- Qeshm — Anchorage; submarine pipeline	18/22
126	Iran – Jazireh-ye Qeys — Directions; major light	20/21
130	Iran -- Bandar--e Pars — Directions; obstruction	49/21
130	Iran – Bandar-e Pars — Arrival information; anchorage; pilotage; ODAS buoy	22/22
130	Iran -- Bandar--e Pars — Basins and berths	49/21
131	Iran -- Tombak and Akhtar — SPMs	42/21
133	Iran – Kalat to Bushehr — Directions; wrecks	04/22
134	Iran – Bushehr — Directions; leading lights	04/22
141	United Arab Emirates -- Dubai -- World Project — Development	31/21
143	United Arab Emirates -- Saqr Port — Anchorage	48/21
143	United Arab Emirates -- Persian Gulf -- Saqr Port — Arrival information; anchorage; pilotage	20/22
143	United Arab Emirates -- RAK Maritime City — Pilotage	50/21
144	United Arab Emirates -- Persian Gulf -- Saqr Port -- Hulaylah Oil Terminal — Anchorage; directions	20/22
144	United Arab Emirates -- RAK Maritime City — Directions	50/21
144	United Arab Emirates -- RAK Khor Port — Limiting conditions; depths	06/22
144	United Arab Emirates -- RAK Khor Port — Buoy; position	06/22
145	United Arab Emirates -- RAK Khor Port — Berths	06/22
146	United Arab Emirates -- Persian Gulf -- Saqr Port -- Musandam Power Plant —	20/22

	Anchorage; wreck	
147	United Arab Emirates -- Dubai -- Palm Deira — Development; directions	33/21
147	United Arab Emirates -- Umm al Qaywayn to Dubai — Directions; buoy	02/22
148	United Arab Emirates -- 'Ajman — Arrival information; anchorages	22/22
149--150	United Arab Emirates -- Dubai -- Al --Hamriyah — Speed restriction	33/21
151	United Arab Emirates -- Sharjah — Arrival information; anchorage	22/22
152	United Arab Emirates -- Dubai -- World Project — Prohibited areas	31/21
152	United Arab Emirates -- Dubai — Development	49/21
152	United Arab Emirates -- Dubai -- Mina' Rashid — Speed restrictions	33/21
152	United Arab Emirates -- Dubai -- World Project — Prohibited areas	33/21
154	United Arab Emirates -- Dubai to Abu Dhabi — Marine nature reserve	10/22
154	United Arab Emirates -- Dubai to Abu Dhabi — Directions	10/22
156	United Arab Emirates -- Dubai -- Umm as Suqaym — Prohibited areas	31/21
157	United Arab Emirates -- Dubai to Abu Dhabi — Dubai Harbour	49/21
157	United Arab Emirates -- Jebel Ali — Restricted areas	31/21
157	United Arab Emirates -- Jebel Ali — Restricted areas; speed restriction	33/21
158	United Arab Emirates -- Jebel Ali -- Hassyen Clean Coal Power Plant — Speed restriction	33/21
159	United Arab Emirates -- Khalifa Port — Pilotage	37/21
162	United Arab Emirates -- Abu Dhabi -- Sas an Nakhl Refinery — Bridge	31/21
163	United Arab Emirates -- Abu Dhabi -- Musaffah Port — Limiting conditions	31/21
166	United Arab Emirates -- Jazirat Das Terminals — Arrival information; restricted areas	50/21
167	United Arab Emirates -- Jazirat Das Boat Harbour — Arrival information; restricted areas	50/21
173	United Arab Emirates -- Jabal Az Zannah and Ar Ruways Port — Directions; buoy	32/21
175	United Arab Emirates -- Jabal Az Zannah -- Mugharaq Port — Limiting conditions; depths	22/22
176	United Arab Emirates -- Jabal Az Zannah -- Mugharaq Port — Directions	22/22
176	United Arab Emirates -- Jabal Az Zannah -- Mugharaq Port — Berths	22/22
176	United Arab Emirates -- Persian Gulf -- Sir Bani Yas — General information; Development	16/22
176	United Arab Emirates -- Persian Gulf -- Sir Bani Yas — General information; Development	22/22
177	United Arab Emirates -- Persian Gulf -- Sir Bani Yas — Directions	16/22
177	United Arab Emirates -- Persian Gulf -- Sir Bani Yas — Jetty	16/22
196	Bahrain -- Bahrain Approaches -- Hayr Bulthameh — Marine nature reserve	10/21
198	Bahrain -- Port of Bahrain -- Mina' Salman — Traffic regulations; restricted area	06/22
199	Bahrain -- Port of Bahrain -- Khawr al Qulay'ah — Anchorages	06/22
202	Bahrain -- Approaches to Ra's Tannurah -- Hayr Bulthameh — Marine nature reserve	10/21
202	Bahrain -- Approaches to Ra's Tannurah -- East Channel — Directions; marine nature reserve	10/21
213	Saudi Arabia -- Persian Gulf -- Ra's al Khair Port King Salman Complex — Development	12/21
217	Saudi Arabia -- Persian Gulf -- Ra's al Khafji — Traffic regulations	17/22
218	Saudi Arabia -- Persian Gulf -- Mina' az Zawr — Restricted area	17/22
221	Kuwait -- Mina' Al--Zour — Arrival information; restricted area	10/21
222	Saudi Arabia -- Persian Gulf -- Mina' az Zawr — Restricted area	17/22
252	Kuwait -- Khawr 'Abd Allah -- Fasht al Ayk — Security zone	17/21

NP64	Red Sea and Gulf of Aden	20th Edition (2021)	32/21
196	Jordan -- Al 'Aqabah — Pilotage		37/21
210	Saudi Arabia -- Red Sea -- Yanbu' al Bahr — Directions; caution		07/22
213	Saudi Arabia -- Persian Gulf -- Ra's al Khair Port — Harbour		16/22
214	Saudi Arabia -- Persian Gulf -- Ra's al Khair Port — Basins and berths		16/22
214	Saudi Arabia -- Yanbu' al Bahr — Arrival information; transshipment areas		07/22
322	Djibouti -- Approaches to Djibouti — Arrival information; pilotage		32/21

UPDATES TO MISCELLANEOUS ADMIRALTY NAUTICAL PUBLICATIONS

In force 30 June 2022

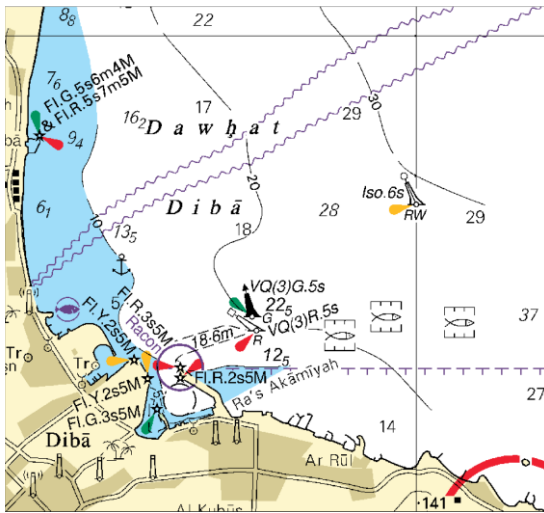
<i>NP no</i>	<i>Page(s)</i>	<i>Title</i>	<i>ANTM Weekly Edition</i>	<i>PNTM Weekly Edition</i>
100	The Mariner's Handbook	(12th Edition 2020)	14/20	
	20	Data Quality	34/21	34/21
	178	National Maritime Limits	13/21	13/21
	218	Satellite Navigation Systems	20/21	26/21
	223	Augmentation Systems	21/21	26/21
	241	Firing and Exercise Areas	52/21	52/21

PART – IV

MARINE INFORMATION

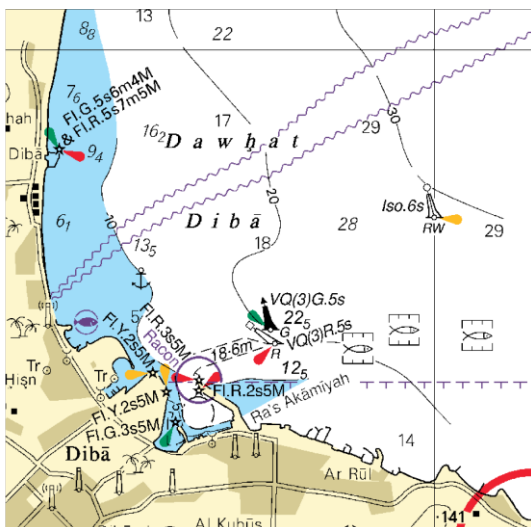
Nil

To accompany Pakistan Notice to Mariners 87/22.



Block for BA Chart No 3171

To accompany Pakistan Notice to Mariners 87/22.



Block for BA Chart No 3520

NP77, Vol D Edition 2022. Weekly Edition No. 26, Dated 30 June 2022.
 Last Updates: Weekly Edition No. 25, dated 23 June 2022.

D2056-2 PT, I, 94-1	- Canal da Embocadura. Aveiro. Entrance. Ldg Lts 060-6°. Front. N Pier -----	40 38-81 N 8 45-04 W ..	Oc R 3s <i>By day</i>	8 ..	9 Orange post, green bands 6 4 ..	<i>ec 1.</i> Vis 5° each side of leading line ..	*
D2094-6 PT, I, 148-2 *	- Exterior W. On the Lock * * *	39 21-27 N 9 22-66 W * * *	Fl R 2s *	4 *	1 □ on red beacon * * *	<i>fl 0-5</i>	*
D2094-7 PT, I, 148-3 *	- Exterior E. On the Lock * * *	39 21-27 N 9 22-66 W * * *	Fl G 2s *	4 *	1 △ on green beacon * * *	<i>fl 0-5</i>	*
D2094-8 PT, I, 148-4 *	- Interior W. On the Lock * * *	39 21-28 N 9 22-68 W * * *	Fl R 2s *	4 *	1 □ on red beacon * * *	<i>fl 0-5</i>	*
D2094-9 PT, I, 148-5 *	- Interior E. On the Lock * * *	39 21-29 N 9 22-67 W * * *	Fl G 2s *	4 *	1 △ on green beacon * * *	<i>fl 0-5</i>	*
D2695 PT, I, 860-5	- Horta. N Mole	38 32-26 N 28 37-32 W	Fl G 3s	12	2 White post, green bands *	<i>fl 1</i>	
D2705	ILHA DAS FLORES Remove from list; deleted						