



PAKISTAN NOTICES TO MARINERS

WEEKLY EDITION 20

Notice: 64 – 67/22

21 MAY 2022

Copies of these Notices can be obtained gratis from Mercantile Marine Department and PN Chart Depot / NAVAREA IX Headquarters, 11 Liaquat Barracks Karachi. The same can be downloaded from web: hydrography.paknavy.gov.pk.

CONTENTS

- I NOTICES TO MARINERS
- II REPRINTS OF RADIO NAVIGATIONAL WARNINGS
- III CORRECTIONS TO SAILING DIRECTIONS
- IV MARINE INFORMATION

Mariners are requested to inform the Hydrographic Department, Naval Headquarters, 11 Liaquat Barracks, Karachi, Pakistan, immediately on the discovery of new dangers, or suspected dangers to navigation and of changes or defects in aids to navigation noticed in NAVAREA IX and of shortcomings in PAK charts or publications.

Tel : + 92-21-48506151
+ 92-21-48506152
Fax : + 92-21-99201623
+ 92-21-35867737

E-mail : hydropk@paknavy.gov.pk
hydrpk@gmail.com

Web : hydrography.paknavy.gov.pk.

MUHAMMAD WASIM
Captain Pakistan Navy
Hydrographer

Hydrographic Department, Naval Headquarters, 11 Liaquat Barracks, Karachi 75530, PAKISTAN

PART – I
NOTICES TO MARINERS

64*/22 UNITED ARAB EMIRATES - Legend.

BA Chart 3715 (INT 7224) [*previous update 283/22*] WGS84 DATUM

Insert legend, Pylons marked by light beacons, orientated WNW/ESE, centred on: 24° 30'·20N., 54° 26'·72E.

Source: Admiralty Notice to Mariners No. 1814*/2022.

65*/22 UNITED ARAB EMIRATES - Wreck.

BA Chart 2837 (INT 7017) [*previous update 1711/22*] WGS84 DATUM

Insert  25° 41'·5N., 55° 34'·9E.

BA Chart 2887 (INT 7232) [*previous update 1711/22*] WGS84 DATUM

Insert  25° 41'·5N., 55° 34'·9E.

BA Chart 2888 (INT 7199) [*previous update 1711/22*] WGS84 DATUM

Insert  25° 41'·5N., 55° 34'·9E.

BA Chart 2889 (INT 7211) [*previous update 1711/22*] WGS84 DATUM

Insert  25° 41'·5N., 55° 34'·9E.

BA Chart 3174 (INT 7209) [*previous update 1711/22*] WGS84 DATUM

Insert  25° 41'·50N., 55° 34'·90E.

BA Chart 3175 (INT 7212) [*previous update 1711/22*] WGS84 DATUM

Insert  25° 41'·50N., 55° 34'·90E.

Source: Admiralty Notice to Mariners No. 1847*/2022.

66*/22 UNITED ARAB EMIRATES - Automatic Identification System.

BA Chart 3752 (Panel B, Khalifa Port) [*previous update 3971/21*] WGS84 DATUM

Insert Automatic Identification System, AIS, at light-buoy 24° 52'·97N., 54° 37'·75E.

Source: Admiralty Notice to Mariners No. 1871*/2022.

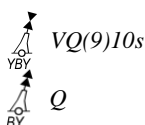
67*/22 JORDAN - NM Block. Buoyage. Lights.

BA Chart 801 (INT 7143) (Panel A, Approaches to Eilat and Al 'Aqabah) [*previous update 3894/21*] WGS84 DATUM

Amend light to, Q(9)15s25m18M 29° 26'·78N., 34° 58'·06E.

BA Chart 801 (INT 7143) (Panel B, Eilat and Al 'Aqabah) [*previous update 3894/21*] WGS84 DATUM

Insert  Q 29° 30'·50N., 34° 59'·61E.
 Q.G 29° 31'·04N., 34° 59'·80E.
 29° 27'·72N., 34° 58'·47E.
 29° 27'·61N., 34° 58'·50E.



Amend light to, Q(9)15s25m18M 29° 27'·43N., 34° 58'·32E.

Amend light to, Q(9)15s25m18M 29° 27'·51N., 34° 58'·39E.

Amend light to, Q(9)15s25m18M 29° 26'·79N., 34° 58'·06E.

BA Chart 801 (INT 7143) (Panel C, Port of Al 'Aqabah) [*previous update 3894/21*] WGS84 DATUM

Insert  Q.G 29° 31'·036N., 34° 59'·803E.
 Q 29° 30'·503N., 34° 59'·607E.

BA Chart 801 (INT 7143) (Panel D, Royal Jordanian Naval Base) [previous update 3894/21] WGS84 DATUM

Insert the accompanying block, centred on: 29° 23'·7N., 34° 57'·9E.

Source: Admiralty Notice to Mariners No. 1961*/2022.

PART – II
RADIO NAVIGATIONAL WARNINGS

- 184/22. CENTRAL GULF.** Qatar. Charts BA 2523 and 2886. Rig Modu Aquamarine Driller will be moved on 15 May 22 by vessels Bourbon Liberty 304, Bourbon Liberty 306 and Halul 70 from 25-54.20N, 051-43.00E to 26-37.18N, 052-04.02E. Mariners are requested to navigate with caution and give wide berth. Cancel this message on 202359 UTC May 22.
- 185/22. NORTHERN GULF.** Kuwait. Charts BA 2882, 2884 and 3773. South cardinal buoy (VQ (6) LFl 10 seconds) temporarily deployed to mark sunken vessel in position 29-19.65N 048-25.48E. Mariners cautioned.
- 186/22. SELF CANCELLING.** Operation completed. Cancel Navarea IX warnings 147 of 2022.
- 187/22. SOUTHERN GULF.** UAE. Charts BA 2889, 3177 and 3713. Seismic survey in progress till 22 May 22 in following areas:
 Receiver Boundary
 24-56.73N 053-21.06E
 24-56.62N 053-27.25E
 24-51.50N 053-27.15E
 24-51.63N 053-20.95E

 Source Boundary
 24-59.95N 053-21.09E
 24-59.83N 053-27.17E
 24-48.25N 053-26.94E
 24-48.37N 053-20.87E

 Fishing, anchoring and diving operations are strictly prohibited. Mariners are advised to navigate with caution and maintain listening watch on channel 75. Cancel this message on 222359 UTC May 22.
- 188/22. SELF CANCELLING.** Operation completed. Cancel Navarea IX warnings 179 of 2022.
- 189/22. SOUTHERN GULF.** UAE. Charts BA 2444, 2886 and 3178. Jacket installation of well head tower in progress by Derrick Lay Barge-1000 (DLB-1000) in position 24-59.10N 053-15.05E. Mariners are advised to navigate with caution and maintain listening watch on VHF channels 12/23 (Das Port Control/VTIS).
- 190/22. SELF CANCELLING.** Yemen. Suqutra. BA Charts 5, 2970 and 2964. Fiber glass boat Saad-2 (brown hull) with 08 person onboard lost contact while transiting from Ash Shhir port to Suqutra Island. Mariners operating in the area are requested to keep sharp lookout and render assistance.
- 191/22. SOMALIA.** Berbera. Charts BA 6, 256 and 2964. Submarine cable laying operation in progress by CS ILE DE BATZ between 10-28.10N 045-01.50E and 11-23.40N 045-10.40E. Wide berth requested. Cancel this message on 24 May 2022.
- 192/22. SELF CANCELLING.** Operation completed. Cancel Navarea IX warning 004 of 2020.
- 193/22. PAKISTAN.** Port Muhammad Bin Qasim Channel. Charts PAK 20 (INT 7316) and BA 59. Maximum permissible draughts/dimensions for ships calling at Port Muhammad Bin Qasim with immediate effect. Details are as under:

<u>Berth</u>	<u>Permissible Draughts (m)</u>	<u>LOA (m)</u>	<u>Beam (m)</u>
LCT	10.00*	210.00	33.00
MW-1	09.50	225.00	33.00
MW-2	10.00	225.00	33.00
MW-3	10.00	225.00	33.00
MW-4	10.50*	225.00	33.00
QICT-I (Berth No 5)	12.00**	up to 310.00	48.00
QICT-I (Berth No 5)	12.00**	more than 310.00	
		up to 340.00	46.50
QICT-I (Berth No 7)	12.50**	up to 310.00	48.00
QICT-I (Berth No 7)	12.50**	more than 310.00	
		up to 340.00	46.50
QICT-II	13.00	up to 310.00	48.00
QICT-II	13.00	more than 310.00	
		up to 340.00	46.50
FAP (Grain & fertilizer)	13.00 Max DWT 75000 tons)	250.00	43.50
EVTL-13	11.00	225.00	40.00
IOCB	12.00 (Max DWT 75000 tons)	230.00	40.00
EETL (LNG-1)	12.00***	295.00	43.40

PGPC (LNG-2)	12.00***	295.00	43.40
FOTCO Oil Terminal	13.00 (Max DWT 75000 tons)	245.00	42.00
SSGC/LPG	10.00	163.00	33.00
PIBT	13.00	230.00	33.00
PQEPC Terminal	12.00	210.00	33.00

* Vessel more than 09.50 m and upto 10.00 m draught at LCT terminal and vessels with more than 10.00 m and upto 10.50 m draught at MW-4 will be allowed by taking benefit of tide.

** Vessel more than 11.50 m and upto 12.00 m draught at QICT-I (Berth No 5) and vessels more then 12.00m and upto 12.50m draught at QICT-I (Berth No 7) will be allowed by taking benefit of tide.

*** LNGC Q-Flex calling to EETL terminal under dispensation are allowed from 16 September to 15 May upto draught of 11.50m.

The above draughts and dimensions are subject to availability of sufficient height of tide favourable wind and weather conditions at the time of passage for berthing / sailing of vessels. Above noted draughts and dimensions are subject to change in case of abnormal siltation if any. Berthing at risk and cost of ship owners / agents. Ships are to commence discharging immediately after berthing. Ships on arrival at outer anchorage are requested to intimate correct draughts and dimensions. Vessels violating notices to mariners will not be accepted. Deep draught vessels calling Port Qasim will be handled by taking benefit of the tide. Any case of misdeclaration / concealment of draughts/ dimensions by the master, owner, agent etc., will be construed as violation to the above notice to mariners and liable for imposition of penalty as per port rules. Container vessel of L.O.A more than 280 meters should be with operational bow thruster or prior permission for berthing / unberthing from PQA will be required. Cancel this message on 16 Nov 2022.

194/22. PAKISTAN. Port Muhammad Bin Qasim. Charts PAK 5 (INT 7314), 20 (INT 7316) and BA 59. Dredging activities in progress at FAP (Grain and Fertilizer Terminal) PQA. The hopper barge AQUA-1 will remain engaged in dumping operations in area bounded by following coordinates:

24-42.23N 067-67.39E
 24-42.16N 067-67.68E
 24-42.18N 067-67.85E
 24-42.14N 067-67.87E
 24-42.11N 067-67.67E
 24-42.17N 067-67.37E

Mariners are requested to navigate with caution.

195/22. SELF CANCELLING. Navigational Warnings Inforce:

2021 series: 024, 086, 109, 223, 224, 292, 336, 368, 397, 398, 399, 408, 445, 448, 490, 491, 492 and 513.
 2022 series: 021, 027, 039, 067, 069, 070, 080, 081, 095, 101, 102, 109, 112, 125, 133, 142, 144, 162, 164, 170, 172, 180, 185, 187, 189, 191, 193 and 194.

COASTAL WARNING

053/22. PAKISTAN. Port Muhammad Bin Qasim Channel. Charts PAK 20 (INT 7316) and BA 59. Maximum permissible draughts/dimensions for ships calling at Port Muhammad Bin Qasim with immediate effect. Details are as under:

<u>Berth</u>	<u>Permissible Draughts (m)</u>	<u>LOA (m)</u>	<u>Beam (m)</u>
LCT	10.00*	210.00	33.00
MW-1	09.50	225.00	33.00
MW-2	10.00	225.00	33.00
MW-3	10.00	225.00	33.00
MW-4	10.50*	225.00	33.00
QICT-I (Berth No 5)	12.00**	up to 310.00	48.00
QICT-I (Berth No 5)	12.00**	more than 310.00 up to 340.00	46.50
QICT-I (Berth No 7)	12.50**	up to 310.00	48.00
QICT-I (Berth No 7)	12.50**	more than 310.00 up to 340.00	46.50
QICT-II	13.00	up to 310.00	48.00
QICT-II	13.00	more than 310.00 up to 340.00	46.50
FAP (Grain & fertilizer)	13.00 Max DWT 75000 tons)	250.00	43.50
EVTL-13	11.00	225.00	40.00
IOCB	12.00 (Max DWT 75000 tons)	230.00	40.00
EETL (LNG-1)	12.00***	295.00	43.40
PGPC (LNG-2)	12.00***	295.00	43.40
FOTCO Oil Terminal	13.00 (Max DWT 75000 tons)	245.00	42.00
SSGC/LPG	10.00	163.00	33.00
PIBT	13.00	230.00	33.00

PQEPC Terminal 12.00 210.00 33.00

* Vessel more than 09.50 m and upto 10.00 m draught at LCT terminal and vessels with more than 10.00 m and upto 10.50 m draught at MW-4 will be allowed by taking benefit of tide.

** Vessel more than 11.50 m and upto 12.00 m draught at QICT-I (Berth No 5) and vessels more then 12.00m and upto 12.50m draught at QICT-I (Berth No 7) will be allowed by taking benefit of tide.

*** LNGC Q-Flex calling to EETL terminal under dispensation are allowed from 16 September to 15 May upto draught of 11.50m.

The above draughts and dimensions are subject to availability of sufficient height of tide favourable wind and weather conditions at the time of passage for berthing / sailing of vessels. Above noted draughts and dimensions are subject to change in case of abnormal siltation if any. Berthing at risk and cost of ship owners / agents. Ships are to commence discharging immediately after berthing. Ships on arrival at outer anchorage are requested to intimate correct draughts and dimensions. Vessels violating notices to mariners will not be accepted. Deep draught vessels calling Port Qasim will be handled by taking benefit of the tide. Any case of misdeclaration / concealment of draughts/ dimensions by the master, owner, agent etc., will be construed as violation to the above notice to mariners and liable for imposition of penalty as per port rules. Container vessel of L.O.A more than 280 meters should be with operational bow thruster or prior permission for berthing / unberthing from PQA will be required. Cancel this message on 16 Nov 2022.

054/22. PAKISTAN. Port Muhammad Bin Qasim. Charts PAK 5 (INT 7314), 20 (INT 7316) and BA 59. Dredging activities in progress at FAP (Grain and Fertilizer Terminal) PQA. The hopper barge AQUA-1 will remain engaged in dumping operations in area bounded by following coordinates:

- 24-42.23N 067-67.39E
- 24-42.16N 067-67.68E
- 24-42.18N 067-67.85E
- 24-42.14N 067-67.87E
- 24-42.11N 067-67.67E
- 24-42.17N 067-67.37E

Mariners are requested to navigate with caution.

055/22. SELF CANCELLING. Navigational Warnings Inforce:

- 2020 Series: 143.
- 2021 Series: 095 and 136.
- 2022 Series: 024, 027, 046, 053 and 054.

WPGs Inforced 2022: 15
WPGs Cancelled 2022: 18

PART – III

CORRECTIONS TO SAILING DIRECTIONS

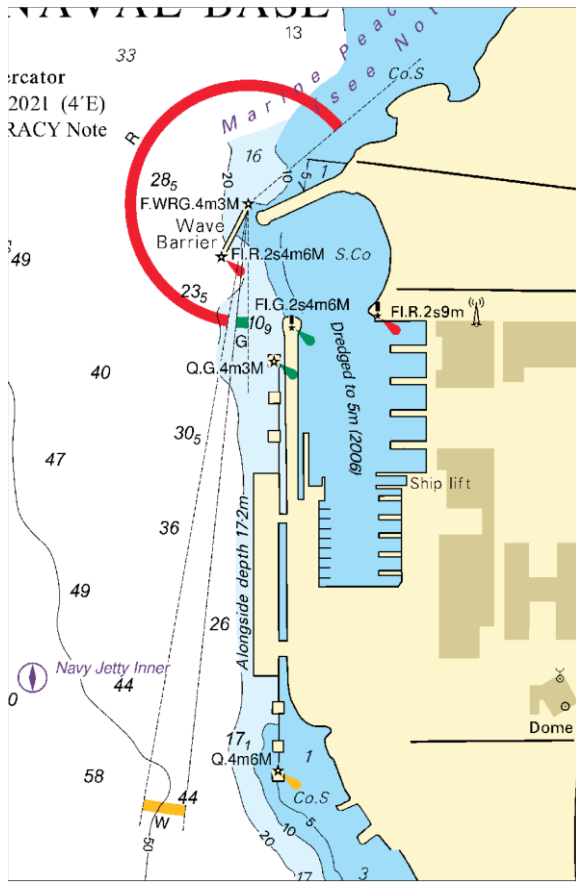
<p>NP63 Persian Gulf Pilot (2021 Edition)</p> <p>United Arab Emirates - Persian Gulf - Saqr Port — Arrival information; anchorage; pilotage</p> <p style="text-align: center;">143</p> <p>Paragraph 7.18 including existing Section IV Notice Week 48/21 <i>Replace by:</i></p> <p>1 Outer anchorages. Designated anchor berths (prefixed S) are situated in an area centred on 26°03'57N 55°55'59E, about 8 miles NW of the harbour.</p> <p>Two designated anchor berths for special operations (prefixed SP) are situated about 3½ miles NW of the harbour.</p> <p>2 Saqr Port Small Vessels Anchorage (25°58'66N 55°51'78E) is situated about 10 miles W of the harbour. Depths of 36 to 41 m, sand.</p> <p>Pilotage is compulsory and available 24 hours. The pilot boards in position 26°01'01N 56°02'50E. For the Deepwater Bulk Terminal the pilot boards at 26°01'80N 56°00'21E.</p> <p>See <i>ADMIRALTY List of Radio Signals Volume 6(8)</i>.</p> <p>GB Chart 2888 (2021) [NP63-No 59-Wk 20/22]</p>	<p>GB Chart 2888 (2021) [NP63-No 59-Wk 20/22]</p> <p>United Arab Emirates - Persian Gulf - Saqr Port - Hūlaylah Oil Terminal — Anchorage; directions</p> <p style="text-align: center;">144</p> <p>Paragraph 7.30 ¹ line(s) 3-4 <i>Delete</i></p> <p>Paragraph 7.31 including heading <i>Replace by:</i></p> <p>Spare 7.31</p> <p>GB Chart 2888 (2021) [NP63-No 60-Wk 20/22]</p> <p>United Arab Emirates - Persian Gulf - Saqr Port - Musandam Power Plant — Anchorage; wreck</p> <p style="text-align: center;">146</p> <p>Paragraph 7.54 ² line 3 <i>Replace by:</i></p> <p>...to 65 m. A wreck (26°07'19N 55°57'76E) is situated near the NE extent of the anchorage area.</p> <p>GB Chart 2888 (2021) [NP63-No 61-Wk 20/22]</p>
----------------------------------------------------------------------------------------------------------------------------------------------------------------------------------------------------------------------------------------------------------------------------------------------------------------------------------------------------------------------------------------------------------------------------------------------------------------------------------------------------------------------------------------------------------------------------------------------------------------------------------------------------------------------------------------------------------------------------------------------------------------------------------------------------------------------------------------------------------------------------------------------------------------------------------------------------------------------------------------------------------------------------------------------------------------	-------------------------------------------------------------------------------------------------------------------------------------------------------------------------------------------------------------------------------------------------------------------------------------------------------------------------------------------------------------------------------------------------------------------------------------------------------------------------------------------------------------------------------------------------------------------------------------------------------------------------------------------------------------------------------------------------------------------------------------------------------------------------------------------------------------------

PART – IV

MARINE INFORMATION

Nil

To accompany Pakistan Notice to Mariners 67/22.



Block for BA Chart No 801

NP77, Vol D Edition 2021. Weekly Edition No. 20, Dated 19 May 2022.
Last Updates: Weekly Edition No. 19, dated 12 May 2022.

<p>D2349-3 ES, I, 09490 ES, I, 09491</p>	<p>- Clarita. No 8</p>	<p>36 54-05 N 6 20-34 W</p>	<p>Dir WG</p>	<p>9</p>	<p>3 Red panel with white stripe, on round metal tower</p>	<p>Iso W 4s 262°-263°(1°). Q G 1s 263°-264.4°(1.4°)</p>
	<p>---</p>	<p>..</p>	<p>Fl Y 5s</p>	<p>3</p>	<p>3 Yellow and white panel on round metal tower</p>	<p>..</p>
			<p>*</p>			<p>*</p>