



# PAKISTAN NOTICES TO MARINERS

## WEEKLY EDITION 11

Notice: 31 - 32/22

19 MAR 2022

Copies of these Notices can be obtained gratis from Mercantile Marine Department and PN Chart Depot / NAVAREA IX Headquarters, 11 Liaquat Barracks Karachi. The same can be downloaded from web: [hydrography.paknavy.gov.pk](http://hydrography.paknavy.gov.pk).

### CONTENTS

- I NOTICES TO MARINERS
- II REPRINTS OF RADIO NAVIGATIONAL WARNINGS
- III CORRECTIONS TO SAILING DIRECTIONS
- IV MARINE INFORMATION

Mariners are requested to inform the Hydrographic Department, Naval Headquarters, 11 Liaquat Barracks, Karachi, Pakistan, immediately on the discovery of new dangers, or suspected dangers to navigation and of changes or defects in aids to navigation noticed in NAVAREA IX and of shortcomings in PAK charts or publications.

Tel : +92-21-48506151  
+92-21-48506152  
Fax : +92-21-99201623  
+92-21-35867737

E-mail : [hydropk@paknavy.gov.pk](mailto:hydropk@paknavy.gov.pk)  
[hydrpk@gmail.com](mailto:hydrpk@gmail.com)

Web : [hydrography.paknavy.gov.pk](http://hydrography.paknavy.gov.pk).

**MUHAMMAD WASIM**  
Captain Pakistan Navy  
Hydrographer

**Hydrographic Department, Naval Headquarters, 11 Liaquat Barracks, Karachi 75530, PAKISTAN**

**PART – I**

**NOTICES TO MARINERS**

**31/22 INDIA - West Coast - Wreck.**

**Chart PAK 33** [ *previous update 157/21* ] WGS84 DATUM

Insert  23° 15'·6N., 67° 48'·8E.

**Chart PAK 57** [ *previous update 22/22* ] WGS84 DATUM

Insert  23° 15'·6N., 67° 48'·8E.

**BA Chart 39** [ *previous update 214/22* ] INDIAN DATUM

Insert  23° 15'·6N., 67° 48'·8E.

**BA Chart 707** [ *previous update 708/22* ] WGS84 DATUM

Insert  23° 15'·6N., 67° 48'·8E.

Source: Admiralty Notice to Mariners No. 937/2022.

**32/22 UNITED ARAB EMIRATES - NM Blocks. Light.**

**BA Chart 2887 (INT 7232)** [ *previous update 400/22* ] WGS84 DATUM

Insert the accompanying block, centred on: 25° 29'·05N., 55° 16'·41E.

**BA Chart 2888 (INT 7199)** [ *previous update 400/22* ] WGS84 DATUM

Insert the accompanying block, centred on: 25° 29'·0N., 55° 20'·8E.

**BA Chart 2889 (INT 7211)** [ *previous update 400/22* ] WGS84 DATUM

Insert the accompanying block, centred on: 25° 29'·0N., 55° 16'·4E.

**BA Chart 3175 (INT 7212)** [ *previous update 400/22* ] WGS84 DATUM

Insert the accompanying block, centred on: 25° 29'·0N., 55° 15'·8E.

Amend light to, Fl.7M 25° 22'·01N., 55° 22'·24E.

**BACart 3176 (INT 7216)** [ *previous update 30/22* ] WGS84 DATUM

Insert the accompanying block, centred on: 25° 26'·7N., 55° 15'·9E.

Amend light to, Fl.7M 25° 22'·01N., 55° 22'·24E.

**BA Chart 3405 (INT 7215) (Panel D, Sharjah (Ash Shariqah))** [ *previous update New Edition 25/11/2021* ] WGS84 DATUM

Insert the accompanying block, centred on: 25° 22'·3N., 55° 22'·0E.

Source: Admiralty Notice to Mariners No. 929/2022.

**PART – II**

**RADIO NAVIGATIONAL WARNINGS**

**105/22. SOUTHERN GULF.** UAE. Charts BA 2837, 2858 and 2889. Seismic survey in progress till 20 Mar 22 in areas bounded by:

Receiver Boundary  
 25-01.46N 053-41.81E  
 25-01.36N 053-47.21E  
 24-56.22N 053-47.09E  
 24-56.32N 053-41.70E

Source Boundary  
 25-01.48N 053-41.91E  
 25-01.38N 053-47.05E  
 24-53.00N 053-46.86E  
 24-53.12N 053-41.72E

Fishing, anchoring and diving operations are strictly prohibited in survey areas. Mariners are advised to navigate with caution and maintain listening watch on channels 16/72. Cancel this message on 202359 UTC Mar 22.

**106/22. PAKISTAN.** Approaches to Karachi. Charts PAK 5 (INT 7314), 33, 57 (INT 751), BA 39 and 58. Firing practice with live ammunition will be carried out between 0300-1100 UTC on 17 and 18 Mar 22 in area bounded by following coordinates:

24-48.40N 066-57.37E  
 24-49.38N 066-45.10E  
 24-44.16N 066-46.08E

24-40.10N 066-49.23E  
24-47.43N 066-58.77E

Vessels are requested to keep well clear of assigned danger area on above specified schedule. Cancel this message on 181300 UTC Mar 2022.

- 107/22. ARABIAN SEA.** Pakistan. Charts PAK 33, 57 (INT 751), BA 707, 4071 and 4705. Submarine cable route survey will be conducted by CS Etislat (IMO 8900191) from 15 Mar 22. Ship will be towing 500 meters long Towfish. Route of the survey is as under:

- a. 24-23.46N 066-16.52E
- b. 24-06.49N 065-30.98E

Mariners are requested to navigate with caution and maintain 1000 meters distance from the vessel. Keep listening watch on VHF channel 16. Cancel Navarea IX warning 098 of 2022.

- 108/22. RED SEA.** Saudi Arabia. BA Charts 12, 159 and 4071. Oil spill exercise will be carried out on 15 and 16 Mar 22 in area bounded by following coordinates:

27-30.10N 035-14.58E  
27-30.19N 035-19.64E  
27-26.80N 035-20.16E  
27-26.68N 035-14.87E

Vessels are requested to keep clear of assigned area. Cancel this message on 162359 UTC Mar 22

- 109/22. SOUTHERN GULF.** UAE. Charts BA 2443, 2444, 2837, 2889 and 3178. Anchor clearance survey in progress by vessels BES Savvy in area bounded by following positions:

24-56.48n 053-03.39e  
24-55.31n 053-10.83e  
25-00.18n 053-13.91e  
25-05.54n 053-14.91e  
25-07.52n 053-20.16e  
25-06.81n 053-21.76e  
25-05.09n 053-21.74e  
25-03.91n 053-17.21e  
24-57.78n 053-16.04e  
24-53.85n 053-11.49e  
24-53.38n 053-03.23e  
24-55.06n 053-02.12e

Vessels navigating in the area are requested to navigate with caution, maintain 500 meter distance around the vessel and keep listening watch on VHF channel 12/23 (Das Port Control/VTIS).

- 110/22. ARABIAN SEA.** Oman. Charts BA 707, 3785 and 4705. Major naval exercise with missile firing will be carried out from 20-31 Mar 22 in area bounded by following coordinates:

- a. 20-43N 059-31E
- b. 20-27N 059-51E
- c. 20-12N 059-59E
- d. 19-36N 059-59E
- e. 18-26N 059-06E
- f. 19-04N 058-14.56E

Live missile firing will take place from 270300 UTC to 281400 UTC Mar 22 with height 30000 Feet in position 19-53N 058-52E. Vessels are to keep well clear of assigned danger area on above specified schedule. Cancel this message on 01 Apr 2022.

- 111/22. SOUTHERN GULF.** UAE. Charts BA 2837, 2889 and 3177. Seismic survey in progress till 23 Mar 22 in areas bounded by:

Receiver Boundary  
24-27.05N 054-08.26E  
24-26.80N 054-20.42E  
24-25.94N 054-22.04E  
24-23.16N 054-22.04E  
24-23.40N 054-08.26E

Source Boundary  
24-28.76N 054-12.78E  
24-28.76N 054-16.72E  
24-27.89N 054-17.46E  
24-21.60N 054-17.46E  
24-21.60N 054-12.78E

Fishing, anchoring and diving operations are strictly prohibited in survey areas. Mariners are advised to navigate with caution and maintain listening watch on channels 75. Cancel this message on 232359 UTC Mar 22.

**112/22. CENTRAL GULF.** Qatar. Charts BA 2837, 2883, 2886 and 2887. Vessel reported capsized in position 26-52.1N, 052-19.4E within Qatar north oil and gas field. The search and rescue still looking for one of the crew members within the area. Mariners are requested to navigate with caution while transiting in the area

**113/22. SELF CANCELLING.** Navigational Warnings Inforce:

- 2020 series: 004
- 2021 series: 024, 086, 109, 223, 224, 292, 336, 368, 372, 397, 398, 399, 408, 421, 445, 448, 475, 477, 481, 490, 491, 492, 503 and 513.
- 2022 series: 020, 021, 027, 030, 039, 041, 066, 067, 068, 069, 070, 079, 080, 081, 085, 090, 091, 095, 100, 101, 102, 103, 105, 107, 109, 110, 111 and 112.

**COASTAL WARNING**

**030/22. PAKISTAN.** Approaches to Karachi. Charts PAK 5 (INT 7314), 33, 57 (INT 751), BA 39 and 58. Firing practice with live ammunition will be carried out between 0300-1100 UTC on 17 and 18 Mar 22 in area bounded by following coordinates:

- 24-48.40N 066-57.37E
- 24-49.38N 066-45.10E
- 24-44.16N 066-46.08E
- 24-40.10N 066-49.23E
- 24-47.43N 066-58.77E

Vessels are requested to keep well clear of assigned danger area on above specified schedule. Cancel this message on 181300 UTC Mar 2022.

**031/22. ARABIAN SEA.** Pakistan. Charts PAK 33, 57 (INT 751), BA 707, 4071 and 4705. Submarine cable route survey will be conducted by CS Etislat (IMO 8900191) from 15 Mar 22. Ship will be towing 500 meters long Towfish. Route of the survey is as under:

- a. 24-23.46N 066-16.52E
- b. 24-06.49N 065-30.98E

Mariners are requested to navigate with caution and maintain 1000 meters distance from the vessel. Keep listening watch on VHF channel 16. Cancel Coastal warning 026 of 2022.

**029/22. SELF CANCELLING.** Navigational Warnings Inforce:

- 2020 Series: 143.
- 2021 Series: 095 and 136.
- 2022 Series: 021, 024, 027, 028 and 031

WPGs Inforced 2022: 06  
WPGs Cancelled 2022: 07 and 08

**PART – III**

**CORRECTIONS TO SAILING DIRECTIONS**

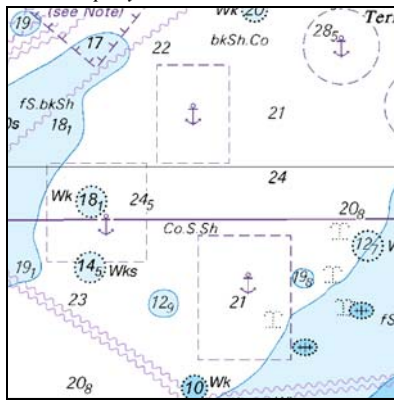
Nil

**PART – IV**

**MARINE INFORMATION**

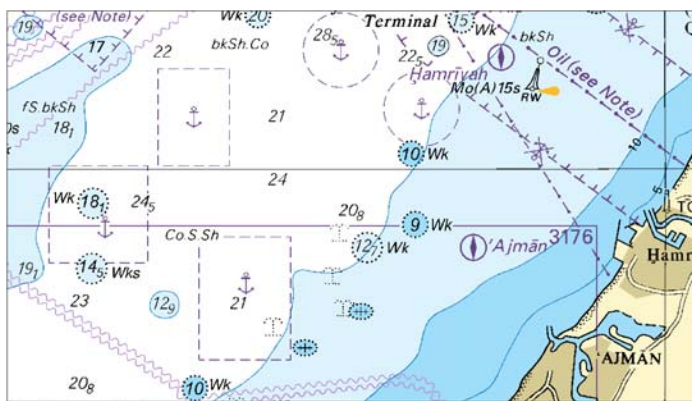
Nil

To accompany Pakistan Notice to Mariners 32/22.



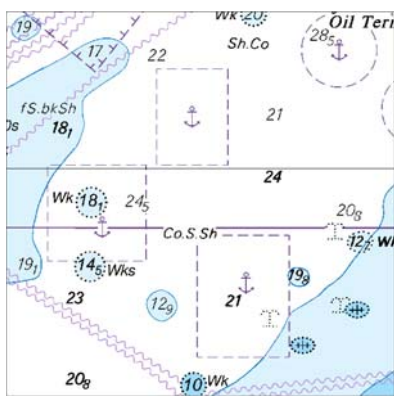
Block for BA Chart No 2887

To accompany Pakistan Notice to Mariners 32/22.



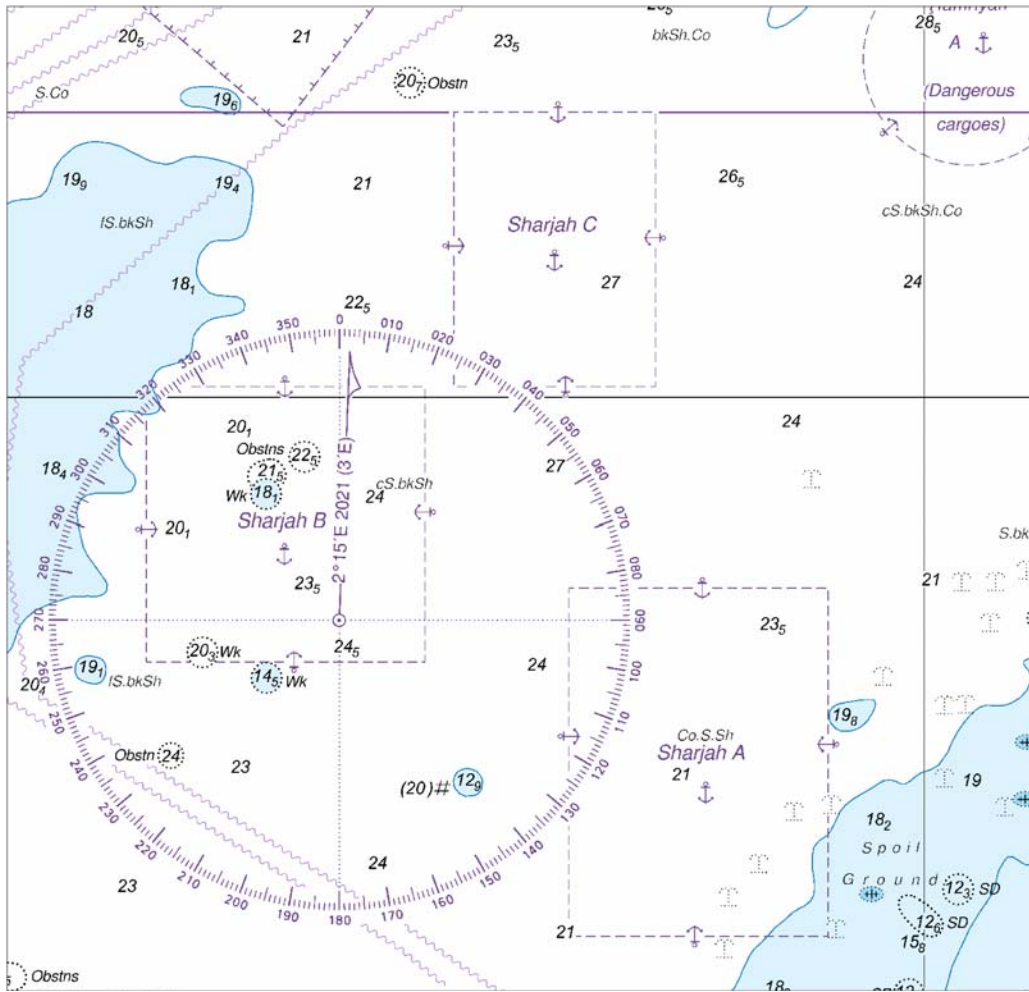
Block for BA Chart No 2888

To accompany Pakistan Notice to Mariners 32/22.



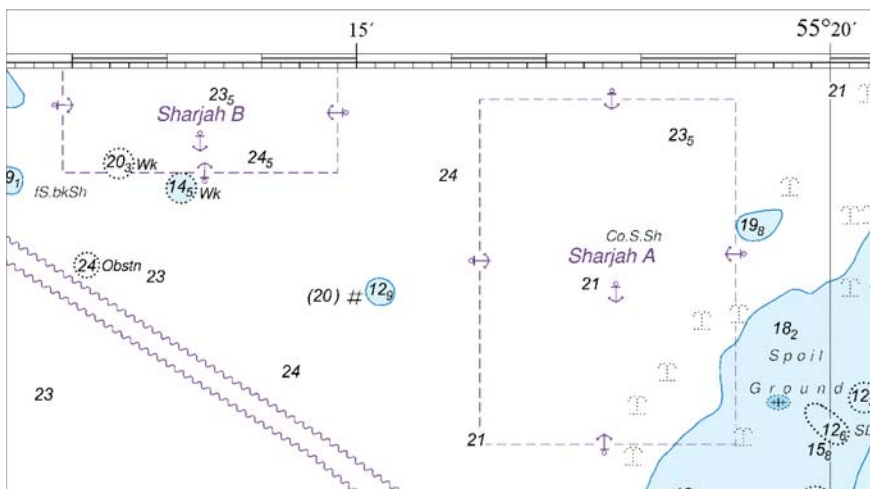
Block for BA Chart No 2889

To accompany Pakistan Notice to Mariners 32/22.



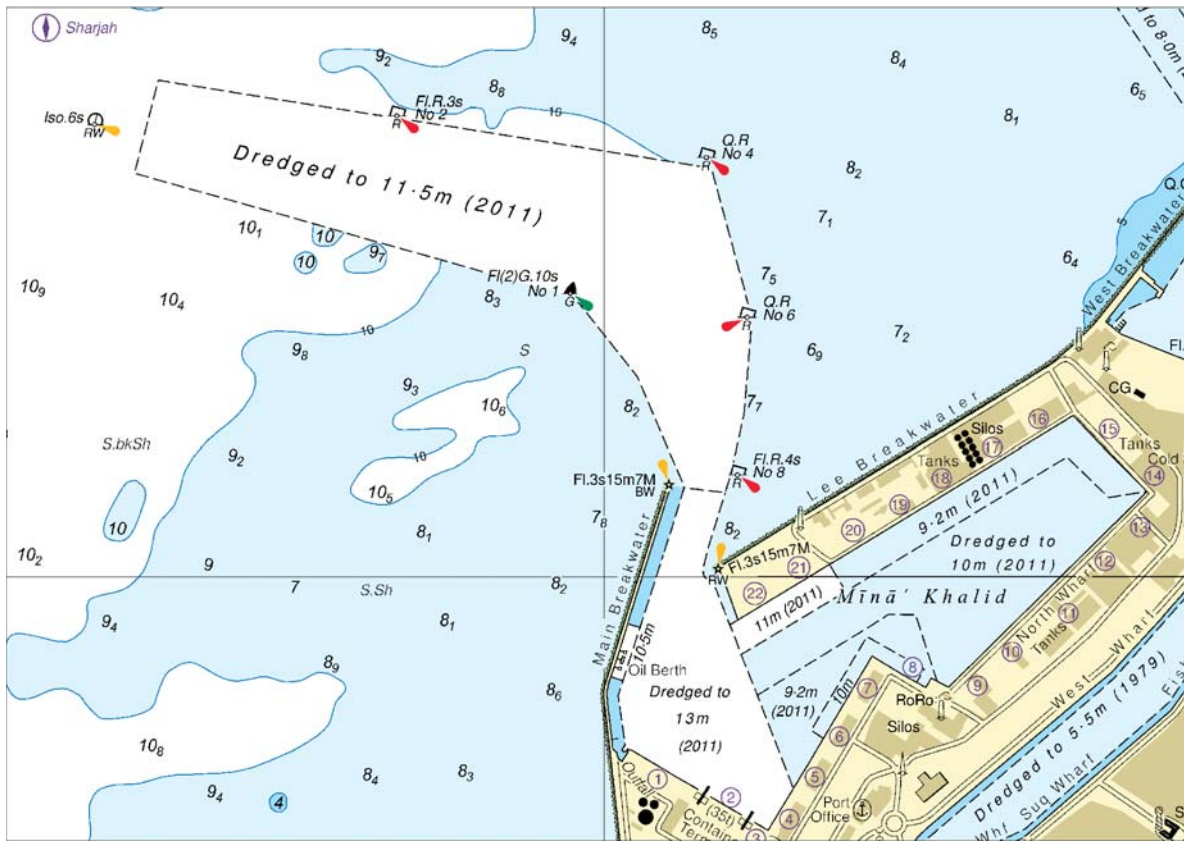
Block for BA Chart No 3175

To accompany Pakistan Notice to Mariners 32/22.



Block for BA Chart No 3176

To accompany Pakistan Notice to Mariners 32/22.



Block for BA Chart No 3176

NP77, Vol D Edition 2021. Weekly Edition No. 11, Dated 17 March 2022.  
 Last Updates: Weekly Edition No. 10, dated 10 March 2022.

<b>D1426-7</b> FR. L1, 48420	- Hendaye. Marina. Jetée Sud. Head	43 22-05 N 1 47-05 W	Q(9)W 15s	5	2 Yellow metal column, black band 4	..
*			*	*	*	*
<b>D7345-8</b>	Saqr Port. RMC Beacon	25 58-02 N 56 02-84 E	Fl W 3s	4	2 White beacon	..
		*	*		*	*
<b>D7734-35</b>	Gwādar. Deep Water Port. Ldg Lts 270°. Rear	25 06-89 N 62 19-38 E	Oc G 3s	45	12 ..	..
			*			*