



PAKISTAN NOTICES TO MARINERS

WEEKLY EDITION 09

Notice: 27 - 29(T)/22

05 MAR 2022

Copies of these Notices can be obtained gratis from Mercantile Marine Department and PN Chart Depot / NAVAREA IX Headquarters, 11 Liaquat Barracks Karachi. The same can be downloaded from web: hydrography.paknavy.gov.pk.

CONTENTS

- I NOTICES TO MARINERS
- II REPRINTS OF RADIO NAVIGATIONAL WARNINGS
- III CORRECTIONS TO SAILING DIRECTIONS
- IV MARINE INFORMATION

Mariners are requested to inform the Hydrographic Department, Naval Headquarters, 11 Liaquat Barracks, Karachi, Pakistan, immediately on the discovery of new dangers, or suspected dangers to navigation and of changes or defects in aids to navigation noticed in NAVAREA IX and of shortcomings in PAK charts or publications.

Tel : +92-21-48506151
+92-21-48506152
Fax : +92-21-99201623
+92-21-35867737

E-mail : hydropk@paknavy.gov.pk
hydrpk@gmail.com

Web : hydrography.paknavy.gov.pk.

MUHAMMAD WASIM
Captain Pakistan Navy
Hydrographer




Hydrographic Department, Naval Headquarters, 11 Liaquat Barracks, Karachi 75530, PAKISTAN

PART – I




NOTICES TO MARINERS

27/22 IRAN - Light. Buoy. Submarine Cables.

Chart PAK 58 [*previous update 22/22*] WGS84 DATUM

Insert	 Fl(2)6s submarine cable,  , joining:	25° 17'·7N., 60° 14'·8E. (a) 25° 16'·7N., 60° 39'·8E. 25° 05'·9N., 60° 36'·1E. and 25° 16'·7N., 60° 40'·1E. 25° 06'·3N., 60° 39'·8E.
Delete	submarine cable,  , joining:	(a) above 25° 13'·5N., 60° 39'·5E.

BA Chart 38 (INT 7019) [*previous update 708/22*] WGS84 DATUM

Insert	 Fl(2)6s submarine cable,  , joining:	25° 17'·7N., 60° 14'·8E. (a) 25° 16'·7N., 60° 39'·8E. 25° 05'·9N., 60° 36'·1E. and 25° 16'·7N., 60° 40'·1E. 25° 06'·3N., 60° 39'·8E.
Delete	submarine cable,  , joining:	(a) above 25° 13'·5N., 60° 39'·5E.

BA Chart 2851 ((Panel A, Khalij-e Chabahar) [*previous update 708/22*] WGS84 DATUM

Insert	 Fl(2)G.6s5M	25° 18'·37N., 60° 35'·00E.
--------	---	----------------------------

BA Chart 2851 [*previous update 708/22*] WGS84 DATUM

Insert	 Fl(2)6s	25° 17'·5N., 60° 14'·8E.
--------	---	--------------------------

Source: Admiralty Notice to Mariners No. 821/2022.

28/22 IRAN - NM Block. Obstructions. Light.

BA Chart 1269 (INT 7299) (Panel B, Bandar-E Emam Khomeyni and Approaches to Bandar-E Mahshahr) [*previous update 5043/21*] WGS84 DATUM

Insert	the accompanying block, centred on:	30° 26'·4N., 49° 03'·0E.
Delete	 12s Rep (1994)  2 F.R (vert)  8s Rep (1994)	30° 25'·58N., 49° 06'·50E. 30° 25'·67N., 49° 06'·77E. 30° 25'·69N., 49° 06'·83E.

Source: Admiralty Notice to Mariners No. 785/2022.

29(T)/22 BAHRAIN - Buoyage.

1. Due to Dredging operations, the following light-buoys have been moved:

<i>Designation</i>	<i>Former Position</i>	<i>New Position</i>
BS-3	26° 11'·252N., 50° 41'·590E.	26° 11'·230N., 50° 41'·582E.
BS-5	26° 11'·495N., 50° 41'·485E.	26° 11'·474N., 50° 41'·459E.

(WGS84 DATUM)

BA Charts affected - 3734 (INT 7261) - 3736 (INT 7258)

Source: Admiralty Notice to Mariners No. 840(T)/2022.

PART – II
RADIO NAVIGATIONAL WARNINGS

084/22. SOUTHERN GULF. UAE. Charts BA 2837, 2858 and 2889. Seismic survey in progress till 06 mar 22 in areas bounded by:

Receiver Boundary
25-01.54N 053-37.81E
25-01.43N 053-44.18E
24-56.28N 053-44.07E
24-56.40N 053-37.70E

Source Boundary
25-01.52N 053-37.91E
25-01.41N 053-44.08E
24-53.06N 053-43.90E
24-53.19N 053-37.73E

Fishing, anchoring and diving operations are strictly prohibited in survey areas. Mariners are advised to navigate with caution and maintain listening watch on channels 16/72. Cancel this message on 062359 UTC Mar 22.

085/22. SOUTHERN GULF. Dubai. Charts BA 2837, 2889, 3176 and 3412. An obstruction reported in position 25-07.500N 55-09.881E. Mariners are advised to navigate with caution.

086/22. GULF OF OMAN. Oman. Charts BA 2851, 2858 and 4705. Oman Chart OM 1, 1214, 1215 and 3505. Naval exercise with live ammunition will be carried out from 060800 to 101000 UTC Mar 22 in area bounded by:

- a. 24-25.0N 057-40.0E
- b. 24-18.0N 057-40.0E
- c. 24-09.0N 057-40.0E
- d. 23-51.3N 058-06.0E
- e. 23-51.5N 058-20.0E
- f. 24-00.0N 058-39.0E
- g. 24-05.0N 058-25.0E
- h. 24-10.0N 058-25.0E

Vessels are requested to keep well clear of assigned danger area on above specified schedule. Cancel this message on 101200 UTC Mar 22.

087/22. ARABIAN SEA. Pakistan. Charts PAK 33, 57 (INT 751), 58 (INT 7019), BA 707, 4071 and 4705. Submarine cable route survey will be conducted by ‘CS ETISLAT (IMO 8900191)’ from 05 to 08 Mar 22 on following route:

- a. 24-17.94N 066-03.72E
- b. 24-00.28N 065-01.09E
- c. 23-29.67N 063-22.88E
- d. 22-38.43N 062-21.02E

Mariners are requested to navigate with caution.

088/22. SELF CANCELLING. Navigational Warnings Inforce:

2020 series: 004
2021 series: 024, 086, 109, 223, 224, 251, 292, 336, 340, 364, 368, 372, 397, 398, 399, 408, 421, 445, 448, 453, 475, 477, 481, 490, 491, 492, 503 and 513.
2022 series: 020, 021, 027, 030, 033, 039, 041, 052, 066, 067, 068, 069, 070, 079, 080, 081, 084, 085, 086 and 087.

COASTAL WARNING

022/22. ARABIAN SEA. Pakistan. Charts PAK 33, 57 (INT 751), 58 (INT 7019), BA 707, 4071 and 4705. Submarine cable route survey will be conducted by ‘CS ETISLAT (IMO 8900191)’ from 05 to 08 Mar 22 on following route:

- a. 24-17.94N 066-03.72E
- b. 24-00.28N 065-01.09E
- c. 23-29.67N 063-22.88E
- d. 22-38.43N 062-21.02E

Mariners are requested to navigate with caution.

023/22. SELF CANCELLING. Navigational Warnings Inforce:

2020 Series: 143.
2021 Series: 095, 096, 127 and 136.
2022 Series: 012, 020, 021 and 022.

WPGs Inforced 2022: 06
WPGs Cancelled 2022: 04

PART – III

CORRECTIONS TO SAILING DIRECTIONS

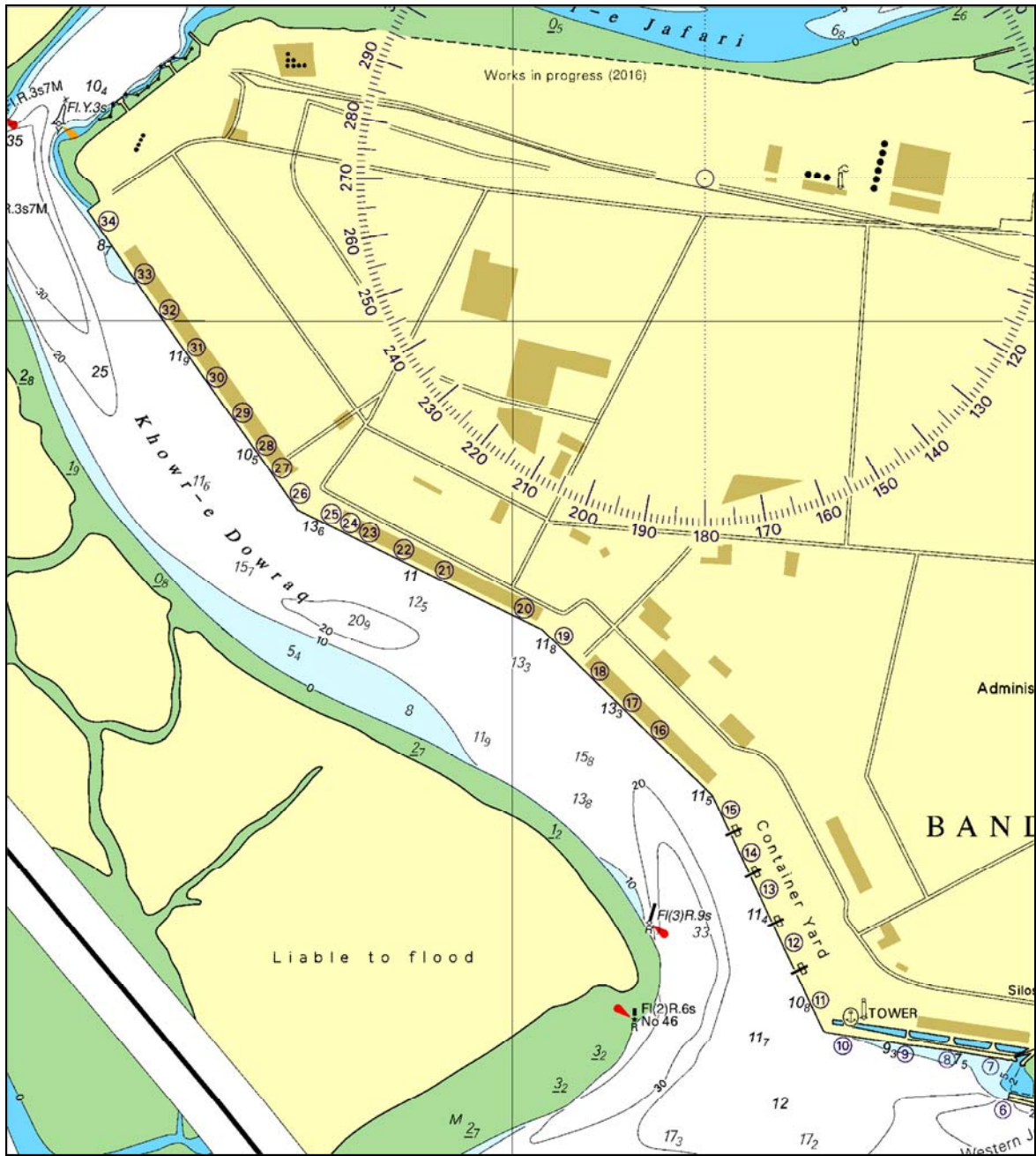
Nil

PART – IV

MARINE INFORMATION

Nil

To accompany Notice to Mariners 28/22.



Block for BA Chart 1269

NP77, Vol D Edition 2021. Weekly Edition No. 9, Dated 03 March 2022.
 Last Updates: Weekly Edition No. 8, dated 24 February 2022.

D2059-611 PT. I, 96-812	- Canal Principal de Navegação. Jusante. Lts in line. Rear. 8m from front	40 39-67 N 8 42-84 W	Fl Y 2-5s	7	2 Yellow x on yellow post 7	<i>fl 0-5.</i> Y356-5°-016-5°(20°). Marks W Limit of CIRES pipeline. TE 2021	*
D2137-95 *	- Alcochete. Bridge Quay. Pier Head *	38 45-42 N 8 57-98 W *	Fl W 5s *	9 *	2 White tower * * *	<i>fl 1</i>	*
D2137-98 *	- Alcochete. Bridge Quay. Pier Head *	38 45-41 N 8 57-99 W *	Fl W 5s *	9 *	2 White tower * * *	<i>fl 1</i>	*
D2681-2 PT. I, 778-0	- Calheta. Pier. Head	38 35-98 N 28 00-57 W	Fl R 3s	12	10 White tower, red bands 6	<i>fl 1.</i> TE 2021	*
D2683-5 PT. I, 790	- Ponta do Norte Grande	38 40-81 N 28 03-08 W	Fl W 6s	34	12 Red column, white bands 5	<i>fl 1.</i> TE 2021	*
D2702 PT. I, 871	ILHA DAS FLORES - Santa Cruz. Pedra Açucareiro	39 27-27 N 31 07-48 W	Fl R 5s	13	4 White column, red bands 6	<i>fl 1.</i> R156°-308°(152°). Shown 24 hours. TE 2021	*