



PAKISTAN NOTICES TO MARINERS

WEEKLY EDITION 44

Notice: 132 – 138(T)/21

06 NOV 2021

Copies of these Notices can be obtained gratis from Mercantile Marine Department and PN Chart Depot / NAVAREA IX Headquarters, 11 Liaquat Barracks Karachi. The same can be downloaded from web: www.paknavy.gov.pk/hydro.

CONTENTS

- I NOTICES TO MARINERS
- II REPRINTS OF RADIO NAVIGATIONAL WARNINGS
- III CORRECTIONS TO SAILING DIRECTIONS
- IV MARINE INFORMATION

Mariners are requested to inform the Hydrographic Department, Naval Headquarters, 11 Liaquat Barracks, Karachi, Pakistan, immediately on the discovery of new dangers, or suspected dangers to navigation and of changes or defects in aids to navigation noticed in NAVAREA IX and of shortcomings in PAK charts or publications.

Tel : + 92-21-48506151
+ 92-21-48506152
Fax : + 92-21-99201623
+ 92-21-35867737

E-mail : hydropk@paknavy.gov.pk
hydropk@gmail.com

Web : www.paknavy.gov.pk/hydro.

MUHAMMAD WASIM
Captain Pakistan Navy
Hydrographer

Hydrographic Department, Naval Headquarters, 11 Liaquat Barracks, Karachi 75530, PAKISTAN

PART – I
NOTICES TO MARINERS

132/21 EGYPT - Red Sea Coast - NM Block.

BA Chart 2133 (INT 7139) [*previous update 405/21*] WGS84 DATUM

Insert the accompanying block, centred on: 29° 52′.9N., 32° 28′.8E.

Source: Admiralty Notice to Mariners No. 4396/2021.

133*/21 UNITED ARAB EMIRATES - Buoy.

BA Chart 3520 (INT 7200) [*previous update New Edition 23/07/2020*] WGS84 DATUM

Amend light-buoy to, *FL.Y.4s* 25° 10′.82N., 56° 24′.47E.

BA Chart 3708 [*previous update 3128/20*] WGS84 DATUM

Amend light-buoy to, *FL.Y.4s* 25° 10′.82N., 56° 24′.47E.

BA Chart 3709 [*previous update 3951/21*] WGS84 DATUM

Amend light-buoy to, *FL.Y.4s* 25° 10′.82N., 56° 24′.47E.

BA Chart 3723 [*previous update 3951/21*] WGS84 DATUM

Amend light-buoy to, *FL.Y.4s* 25° 10′.82N., 56° 24′.47E.

Source: Admiralty Notice to Mariners No. 4412*/2021.

134*/21 KUWAIT - Restricted areas.

BA Chart 1224 (Panel B, Ra’s Al Khafji Terminal) [*previous update 261/21*] WGS84 DATUM

Insert limit of restricted area, anchoring, fishing and diving prohibited, $\uparrow\uparrow\uparrow\uparrow$, joining: 28° 31′.61N., 48° 36′.23E.
28° 29′.63N., 48° 37′.31E.
28° 29′.03N., 48° 37′.98E.
28° 28′.04N., 48° 36′.52E.
28° 29′.18N., 48° 36′.30E.
28° 31′.61N., 48° 35′.00E.

BA Chart 1224 [*previous update 261/21*] WGS84 DATUM

Insert limit of restricted area, anchoring, fishing and diving prohibited, $\uparrow\uparrow\uparrow\uparrow$, joining: 28° 34′.33N., 48° 34′.74E.
28° 29′.63N., 48° 37′.31E.
28° 29′.03N., 48° 37′.98E.
28° 28′.04N., 48° 36′.52E.
28° 29′.18N., 48° 36′.30E.
28° 34′.33N., 48° 33′.54E.

BA Chart 2882 (INT 7264) [*previous update 1086/21*] WGS84 DATUM

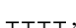
Insert limit of restricted area, anchoring, fishing and diving prohibited, $\uparrow\uparrow\uparrow\uparrow$, joining: (a) 28° 37′.0N., 48° 33′.3E.
28° 29′.6N., 48° 37′.3E.
28° 29′.0N., 48° 38′.0E.
28° 28′.0N., 48° 36′.5E.
28° 29′.2N., 48° 36′.3E.
(b) 28° 36′.4N., 48° 32′.4E.

Delete former limit of restricted area, anchoring, fishing and diving prohibited, $\uparrow\uparrow\uparrow\uparrow$, joining: (a) above
(b) above

BA Chart 2884 (INT 7278) [*previous update 1366/21*] WGS84 DATUM

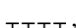
Insert limit of restricted area, anchoring, fishing and diving prohibited, $\uparrow\uparrow\uparrow\uparrow$, joining: (a) 28° 37′.0N., 48° 33′.3E.
28° 29′.6N., 48° 37′.3E.

28° 29'·0N., 48° 38'·0E.
 28° 28'·0N., 48° 36'·5E.
 28° 29'·2N., 48° 36'·3E.

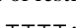
Delete former limit of restricted area, anchoring, fishing and diving prohibited, , joining:

(b) 28° 36'·4N., 48° 32'·4E.
 (a) above
 (b) above

BA Chart 3773 [*previous update 3921/21*] WGS84 DATUM

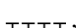
Insert limit of restricted area, anchoring, fishing and diving prohibited, , joining:

(a) 28° 36'·95N., 48° 33'·31E.
 28° 29'·63N., 48° 37'·31E.
 28° 29'·03N., 48° 37'·98E.
 28° 28'·04N., 48° 36'·52E.
 28° 29'·18N., 48° 36'·30E.
 (b) 28° 36'·38N., 48° 32'·45E.

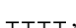
Delete former limit of restricted area, anchoring, fishing and diving prohibited, , joining:

(a) above
 (b) above

BA Chart 3774 (INT 7275) [*previous update 261/21*] WGS84 DATUM

Insert limit of restricted area, anchoring, fishing and diving prohibited, , joining:

(a) 28° 36'·95N., 48° 33'·31E.
 28° 29'·63N., 48° 37'·31E.
 28° 29'·03N., 48° 37'·98E.
 28° 28'·04N., 48° 36'·52E.
 28° 29'·18N., 48° 36'·30E.
 (b) 28° 36'·38N., 48° 32'·45E.

Delete former limit of restricted area, anchoring, fishing and diving prohibited, , joining:

(a) above
 (b) above

Source: Admiralty Notice to Mariners No. 4416*/2021.

135/21 PAKISTAN - NM Blocks. Anchorage areas. Depths. Jetty. Pilot boarding place.

Note: Former Notice 1811(P)/21 (PAK Notice 63(P)/21) is cancelled

BA Chart 38 (INT 7019) [*previous update 4027/21*] WGS84 DATUM

Insert 

24° 55'·0N., 66° 31'·8E.
 24° 53'·1N., 66° 31'·8E.
 24° 51'·0N., 66° 31'·9E.

Delete depth, 6₂
 depth, 9, close NW of:

(a) 24° 53'·5N., 66° 39'·3E.
 (a) above

Insert jetty, single firm line, joining:

24° 55'·0N., 66° 41'·1E.
 24° 54'·9N., 66° 40'·2E.
 24° 52'·5N., 66° 38'·7E.



BA Chart 39 [*previous update 4024/21*] WGS84 DATUM

Insert 

24° 55'·0N., 66° 31'·8E.
 24° 53'·1N., 66° 31'·8E.
 24° 51'·0N., 66° 31'·7E.

Delete depth, 6₂
 depth, 9, close NW of:

(a) 24° 53'·5N., 66° 39'·3E.
 (a) above

Insert jetty, single firm line, joining:

24° 55'·0N., 66° 41'·1E.
 24° 54'·9N., 66° 40'·2E.
 24° 53'·3N., 66° 38'·4E.



BA Chart 58 (INT 7314) [*previous update New Edition 06/05/2021*] WGS84 DATUM

Insert the accompanying block A, centred on:

24° 53'·05N., 66° 32'·57E.

the accompanying block B, centred on:

⬆ *Byco*

depth, *I*₂, enclosed by 20m contour

depth, *I*₇, enclosed by 20m contour

24° 54′·26N., 66° 39′·81E.

24° 57′·00N., 66° 31′·00E.


24° 50′·46N., 66° 37′·98E.

24° 50′·20N., 66° 37′·31E.

Source: Admiralty Notice to Mariners No. 4469/2021.

136/21 PAKISTAN - Light-beacon.

BA Chart 59 (INT 7316) [*previous update 5376/20*] WGS84 DATUM

Insert  Fl(2)Y.8s10m4M No.6

24° 43′·30N., 67° 08′·68E.

Source: Admiralty Notice to Mariners No. 4474/2021.

137(P)/21 UNITED ARAB EMIRATES - Buoy.

<i>Update</i>	<i>Feature</i>	<i>Position</i>
Amend	light-buoy to, <i>Fl.Y.4s</i>	25° 10′·82N., 56° 24′·47E.

BA Chart affected - 8101

Source: Admiralty Notice to Mariners No. 4429(P)/2021.

138(T)/21 INDIA - West Coast - Data buoys.

1. *Yellow data light-buoys, *Fl(4)I5s*, with radar reflectors and mast carrying sensors have been established in the following positions:

<i>Buoy</i>	<i>Position</i>
STB02/TB	20° 45′·6N., 65° 16′·8E.
TB12/TB	19° 53′·2N., 68° 58′·7E.
AD06/OB	18° 24′·5N., 67° 28′·2E.

- 2. Mariners are advised to maintain a clearance of 1 nautical mile.
- 3. *Former Notice 1723(T)/21 (PAK Notice 61(T)/21) is cancelled.
*Indicates new or revised entry
(WGS84 DATUM)

Charts affected – PAK 57 (INT 751) and BA 707

Source: Admiralty Notice to Mariners No. 4468(T)/2021.

PART – II
RADIO NAVIGATIONAL WARNINGS

407/21. RED SEA. Saudi Arabia. BA Charts 158 and 4071. Firing practice in progress on 31 Oct 2021 to 04 Nov 2021 between 0500 to 1400 UTC in area bounded by:

- 20-46.50N 039-00.00E
- 20-46.50N 038-38.00E
- 20-26.50N 038-38.00E
- 20-26.50N 039-00.00E

Ships and craft are to keep well clear of assigned danger area on above specified schedule. Cancel this message on 041500 UTC Nov 2021.

408/21. RED SEA. Saudi Arabia (Yanbu). BA charts 158 and 326. Area bounded by the following positions designated as operational ship to ship transfer (STS) area:

- 23-50.00N 037-42.50E
- 23-27.10N 037-34.30E
- 23-11.90N 038-00.00E
- 23-27.90N 038-13.00E

Vessels conducting STS operations will be underway at slow speed and restricted in their ability to manoeuvre. Mariners are requested to navigate with caution and give wide berth.

409/21. SOUTHERN GULF. UAE. Charts BA 2837, 2889, 3179 and 3951. Dalma buoy in position 24-32.51N 052-27.85E lantern restored to normal. Racon still not functional, buoy is not fitted with AIS. Mariners are requested to navigate with caution. Cancel Navarea IX warning 401 of 2021.

410/21. SOUTHERN GULF. UAE. Charts BA 2837, 2858 and 2889. Seismic survey in progress till 07 Nov 2021 in area bounded by:

Crew 252 & 253 Area:
Receiver Boundary
25-14.85N 053-35.50E
25-14.88N 053-44.79E
24-57.37N 053-44.75E
24-57.34N 053-35.48E

Source Boundary
25-18.03N 053-36.48E
25-18.06N 053-44.70E
24-57.37N 053-44.68E
24-57.34N 053-36.40E

Fishing, anchoring and diving operations are strictly prohibited in bounded areas. Mariners are advised to navigate with caution and to maintain a listening watch on channels 16/72. Cancel this message on 072359 UTC Nov 21

411/21. SELF CANCELLING. Operation completed. Cancel Navarea IX warning 404 of 2021.

412/21. CENTRAL GULF. Qatar. Charts BA 2523, 2837, 2883 and 2886. Mooring buoy is being laid in position 26-41.02N 051-54.36E by vessel 'Hulul 70'. Mariners are requested to give wide berth.

413/21. SOUTHERN GULF. UAE. Charts BA 2889 and 3178. 'Swissco Neptune' will commence geophysical and anchor clearance survey from 03 Nov 21 at hail field to Mubarraz in area bounded by following positions:

24-27.30N 053-21.16E
24-27.30N 053-23.18E
24-22.88N 053-23.18E
24-22.88N 053-21.16E

Vessels and crafts are requested to navigate with caution while transiting near the vessel work zone. Exclusion zone of 500 meter around the survey vessel will be established. Maintain a listening watch on VHF channel 12/23 (Das Port Control/VTIS).

414/21. CENTRAL GULF. Bahrain. Charts BA 2837 and 3178. "MV Ams Onyx" and "MV Zakher Duty" are conducting diving operation at following positions:

Location 1 24-50.20N 053-15.80E
Location 2 24-50.00N 053-14.58E

White color mooring buoys without light have been deployed at the locations. There will be 500 meter exclusion zone around the diving vessels. Mariners are requested to maintain safe distance from the buoys and navigate with caution. Cancel this message on 052359 UTC Nov of 2021.

415/21. SELF CANCELLING. Operation completed. Cancel Navarea IX warning 373 of 2021.

416/21. CENTRAL GULF. Bahrain. BA Charts 3736 and 3737. Local Charts 5004 and 1501. Buoy BS-3 and BS-5 will be temporarily moved due to dredging operation (Bahrain Steel Jetty Area) from their current location to following new positions from 04 Nov 21.

a. BS-3 26-11.230N 050-41.582E.
b. BS-5 26-11.474N 050-41.459E.

Mariners cautioned.

417/21. SELF CANCELLING. Cancel Navarea IX warning 379 of 2021.

418/21. CENTRAL GULF. Qatar. Charts BA 2523 and 2886. Pacific Grouse will conduct geophysical survey operation on 05 Nov 21 at slow speed in 2 x 2 square kilometer area bounded by following positions:

aa. 26-36.124N 051-40.954E
bb. 26-28.980N 051-59.570E
cc. 26-04.704N 051-26.168E
dd. 25-57.593N 051-44.717E

Vessel will be restricted in her ability to manoeuvre. Mariners are requested to navigate with caution and give wide berth.

419/21. SOUTHERN GULF. UAE. Charts BA 2443 and 2889. Stanford Provider will commence bathymetry survey on 04 Nov 21 in area bounded by following positions:

25-02.42N 053-16.50E

25-02.28N 053-25.42E
 24-53.82N 053-16.35E

Fishing, anchoring and diving operations are strictly prohibited in bounded area. There will be 500 meter exclusion zone around the survey vessel. Mariners are advised to navigate with caution and maintain listening watch on vhf channels 12/23 (Das Port Control/VTIS).

420/21. SELF CANCELLING. Cancel Navarea IX warning 150 of 2020. Published in admiralty NTM 39 of 2021.

421/21. CENTRAL GULF. Qatar. Charts BA 2523, 2837, 2883 and 2886. Mooring buoy fitted with lantern coded Mo(U)15 seconds has been laid in position 26-41.01N 051-54.39E. Mariners are requested to give wide berth. Cancel Navarea IX warning 412 of 2021

422/21. SELF CANCELLING. Navigational Warnings Inforce:

2020 series: 004, 266, 336 and 350

2021 series: 024, 086, 088, 109, 152, 176, 206, 223, 224, 238, 251, 265, 266, 292, 299, 305, 307, 321, 323, 335, 336, 340, 358, 363, 364, 368, 371, 372, 374, 377, 381, 382, 397, 398, 399, 402, 405, 408, 410, 412, 413, 416, 418, 419 and 421

COASTAL WARNING

119/21. SELF CANCELLING. Navigational Warnings Inforce:

2020 Series: 110 and 143.

2021 Series: 089, 094, 095, 096, 105, 110 and 117.

WPGs Inforced 2021: 51

WPGs Cancelled 2021: Nil

PART – III

CORRECTIONS TO SAILING DIRECTIONS

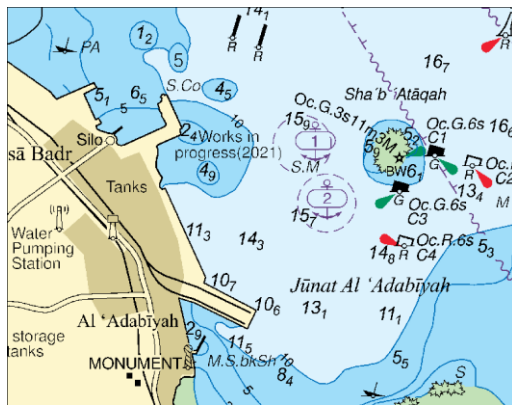
Nil

PART – IV

MARINE INFORMATION

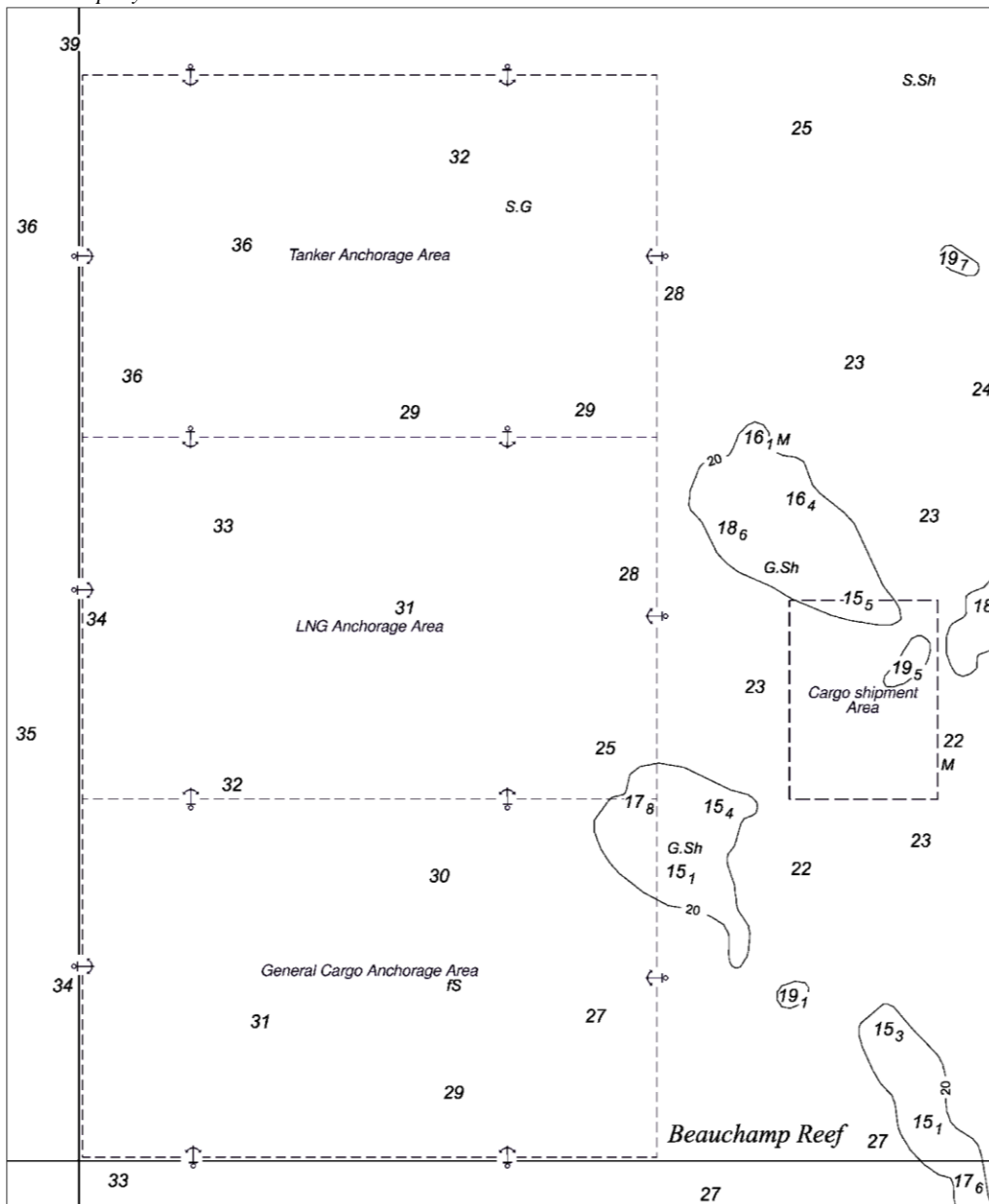
Nil

To accompany Pakistan Notice to Mariners 132/21.



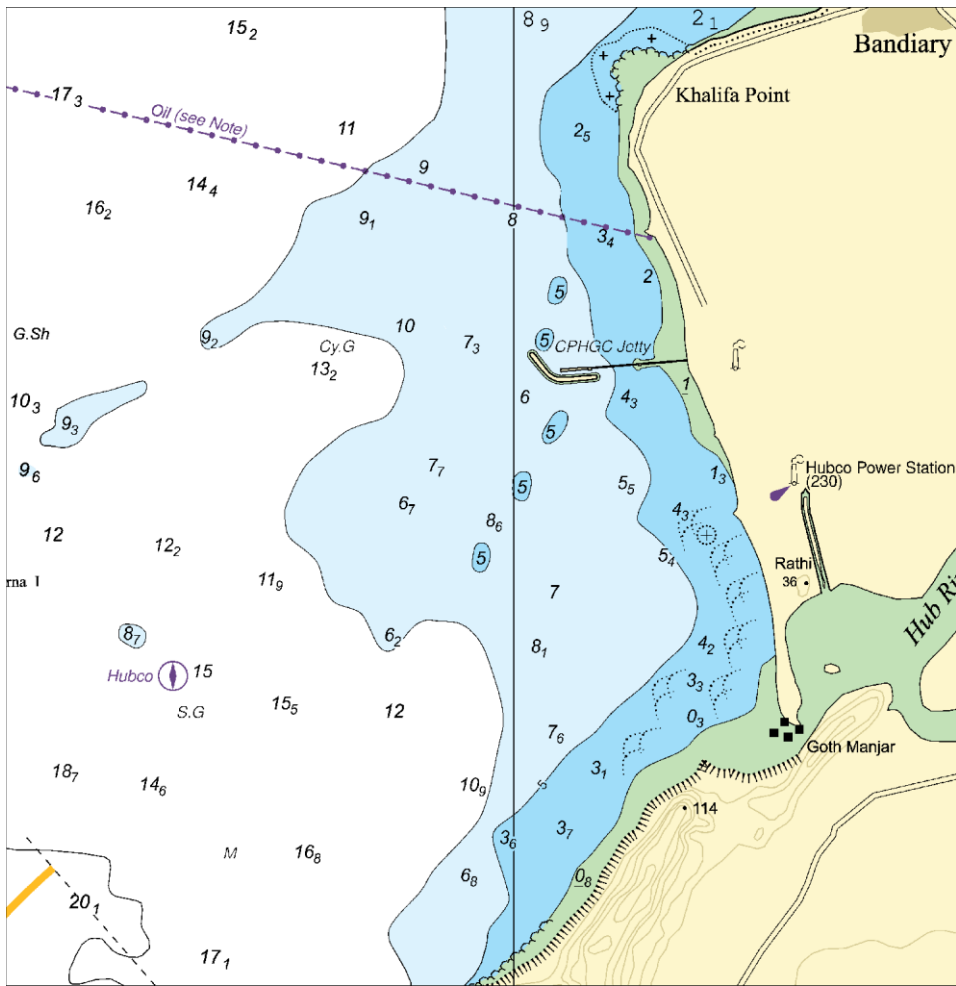
Block for BA Chart No 2133

To accompany Pakistan Notice to Mariners 135/21.



Block A for BA Chart No 58

To accompany Pakistan Notice to Mariners 135/21.



Block B for BA Chart No 58

NP77, Vol D Edition 2021. Weekly Edition No. 44, Dated 04 November 2021.
Last Updates: Weekly Edition No. 43, dated 28 October 2021.

D1750 ES, I, 03915	- Puerto de Finisterre. Small Craft Jetty. Head	42 54-46 N 9 15-65 W	Fl(3)G 9s	..	1	Green and white post	(fl 0-5, ec 1-5) x 2, fl 0-5, ec 4-5. TE 2021	*
D2542 FR, LC, 17640 ES, I, 13200	- N Breakwater. Head	34 16-03 N 6 41-03 W	Iso R 4s	17	6	Red tower, white band 6	River marked by beacons up to Kénitra. TE 2021	*
D2566 MA, , 14050 FR, LC, 18300 ES, I, 13310	CASABLANCA - Oukacha - - Auxiliary	33 36-94 N 7 33-77 W ..	Oc(2)W 6s FR	29 24	18 8	White square tower, red lantern ..	W110°-255°(145°). TE 2021 R055°-110°(55°). Oc(3)R 15s 29m 16M 060°-245° (185°) (P) 2021	*