



PAKISTAN NOTICES TO MARINERS

WEEKLY EDITION 43

Notice: 130 - 131(P)/21

30 OCT 2021

Copies of these Notices can be obtained gratis from Mercantile Marine Department and PN Chart Depot / NAVAREA IX Headquarters, 11 Liaquat Barracks Karachi. The same can be downloaded from web: www.paknavy.gov.pk/hydro.

CONTENTS

- I NOTICES TO MARINERS
- II REPRINTS OF RADIO NAVIGATIONAL WARNINGS
- III CORRECTIONS TO SAILING DIRECTIONS
- IV MARINE INFORMATION

Mariners are requested to inform the Hydrographic Department, Naval Headquarters, 11 Liaquat Barracks, Karachi, Pakistan, immediately on the discovery of new dangers, or suspected dangers to navigation and of changes or defects in aids to navigation noticed in NAVAREA IX and of shortcomings in PAK charts or publications.

Tel : + 92-21-48506151
+ 92-21-48506152
Fax : + 92-21-99201623
+ 92-21-35867737

E-mail : hydropk@paknavy.gov.pk
hydropk@gmail.com

Web : www.paknavy.gov.pk/hydro.

MUHAMMAD WASIM
Captain Pakistan Navy
Hydrographer

Hydrographic Department, Naval Headquarters, 11 Liaquat Barracks, Karachi 75530, PAKISTAN

PART – I**NOTICES TO MARINERS****130/21 PAKISTAN - NM Blocks. Anchorage areas. Depths. Pilot boarding place.****Chart PAK 5 (INT 7314) [previous update 155/19] WGS84 DATUM**





Insert	the accompanying block, centred on:	24° 54′.26N., 66° 39′.81E.
Insert	 <i>Byco</i>	24° 57′.00N., 66° 31′.00E.
	 <i>Tanker</i>	24° 55′.00N., 66° 31′.80E.
	 <i>LNG</i>	24° 53′.00N., 66° 31′.80E.
	 <i>General Cargo</i>	24° 51′.00N., 66° 31′.80E.
	depth, <i>I</i> ₂ , enclosed by 20m contour	24° 50′.46N., 66° 37′.98E.
	depth, <i>I</i> ₆₇ , enclosed by 20m contour	24° 50′.20N., 66° 37′.31E.
	legend, Cargo Shipment Area, centred on:	24° 52′.50N., 66° 34′.75E.

Chart PAK 22 [previous update 91/21] WGS84 DATUM

Insert	depth, <i>I</i> ₂ , enclosed by 20m contour	24° 50′.46N., 66° 37′.98E.
	legend, Cargo Shipment Area, centred on:	24° 52′.50N., 66° 34′.75E.

Source: PAK Chart 6.

131(P)/21 IRAN - Single Point Moorings. Submarine pipelines. Buoyage.

- Single Point Moorings (SPM) have been established in the following positions:
25° 53′.14N., 57° 13′.35E.
25° 51′.98N., 57° 13′.99E.
25° 50′.75N., 57° 14′.90E.
- Submarine pipelines have been laid joining the following positions:
25° 51′.30N., 57° 17′.67E.
25° 53′.14N., 57° 13′.35E.
and
25° 51′.98N., 57° 13′.99E.
25° 51′.29N., 57° 17′.67E.
and
25° 51′.28N., 57° 17′.67E.
25° 50′.75N., 57° 14′.90E.
- West cardinal light-buoys, *Q(9)15s*, have been established in the following positions:
25° 57′.66N., 57° 10′.47E.
25° 56′.78N., 57° 12′.80E.
- Mariners are advised to navigate with caution in the area.
- These changes will be included in a New Edition of BA Charts 3171 and 2888 to be published late 2021. (WGS84 DATUM)

BA Charts affected - 2888 (INT 7199) - 3171

Source: Admiralty Notice to Mariners No. 4350(P)/2021.

PART – II**RADIO NAVIGATIONAL WARNINGS**

- 393/21. CENTRAL GULF.** Qatar. Charts BA 2523, 2837, 2858, and 2886. “Mick O Brien” drilling rig will be moved on 24 Oct 21 by vessels “Vortex Van guard”, “Lanpan 32” and “Lanpan 35” the towage will commence from its current position 25-53.43N, 051-44.11E to position 26-19.56N, 052-07.15E. Mariners are requested to navigate with caution. Cancel this message on 262359 Oct 2021.
- 394/21. SELF CANCELLING.** Buoy replaced in charted position. Cancel Navarea IX warning 384 of 2021.
- 395/21. SELF CANCELLING.** Diving operation completed. Cancel Navarea IX warning 332 of 2021.
- 396/21. SOUTHERN GULF.** UAE. Charts BA 2837, 3179 and 3780. West middle buoy at Ruwais middle ground area in position 24-11.74N, 052-42.77E reported unlit. Mariners are requested to navigate with caution.
- 397/21. ARABIAN SEA, GULF OF OMAN AND PERSIAN GULF.** US NGA Hydropac (navigational warning)1478/20 (62,63) is reproduced as received for the information of mariners and safety of navigation. US naval forces are conducting routine operations in the region with a commitment to freedom of navigation and the free flow of maritime commerce. Due to recent events, in order to enhance safety, minimize ambiguity, and reduce opportunities for miscalculation, all vessels are advised to maintain a safe distance of at least 100 meters from U.S. naval vessels in international waters/straits. Armed vessels approaching within 100 meters of a U.S. naval vessel may be interpreted as a threat and subject to lawful defensive measures.

Mariners are reminded to operate in accordance with international law and with due regard for the safe navigation of other vessels. All vessels operating in the vicinity of U.S. naval vessels are advised to clearly communicate intentions, respond to queries concerning course and speed, exercise principles of prudent seamanship as required under international law and remain at the maximum available distance from U.S. naval force. Cancel Navarea IX warning 215 of 2020.

398/21. EGYPT. Gulf of Suez. Charts BA 159, 2133 and 2373. Safe water mark buoy in position 29-48.57N 032-32.15E reported unlit. Mariners cautioned. Cancel Navarea IX warning 451 of 2020

399/21. PAKISTAN. Karachi. Charts Pak 33, 57 (INT 751), 58 (INT 7019), BA 38 and 707. Karachi radio (Navtex Station) in position 24-52.78N 067-09.94E inoperative. All navigational warnings are being transmitted on international Safety net and available on website www.hydrography.paknavy.gov.pk/navarea-ix-warnings. Mariners cautioned. Cancel Navarea IX warning 301 of 2021

400/21. SOUTHERN GULF. UAE. Charts BA 2837, 2858 and 2889. Seismic survey in progress till 31 Oct 2021 in area bounded by:

Crew 252 and 253 area:

Receiver boundary

25-14.96N 053-38.66E

25-14.90N 053-47.52E

24-57.37N 053-47.55E

24-57.34N 053-38.60E

Source Boundary

25-18.03N 053-39.48E

25-18.06N 053-47.36E

24-57.37N 053-47.32E

24-57.34N 053-39.40E

Mariners are advised to navigate with caution and to maintain a listening watch on channels 16/72. Cancel this message on 312359 UTC Oct 21

401/21. SOUTHERN GULF. UAE. Charts BA 2837, 2889, 3179 and 3951. Dalma buoy in position 24-32.51N 052-27.85E, Lantern restored to normal. Racon and AIS still not functional. Mariners are requested to navigate with caution. Cancel Navarea IX warning 203 of 2021

402/21. CENTRAL GULF. Bahrain. Charts BA 2886, 3736, 3737 and 3790. Local chart: 1501. Diving operations will be conducted by UK Navy watercraft during daylight hours from 26 Oct 21 on following route:

26-12.28N 050-37.07E

26-11.99N 050-38.98E

The watercraft will be restricted in its ability to manoeuvre and an exclusion area of 100 meters around the cable run and up to the end points. All vessels are requested to navigate with extreme caution and observe the safety zone.

403/21. SELF CANCELLING. Buoy restored to normal. Cancel Navarea IX warning 396 of 2021

404/21. CENTRAL GULF. QATAR. Charts BA 2523, 2837, 2858 and 2886. Geophysical survey in progress by 'Fugro Protues' along with daughter craft 'Thea'. 'Fugro Thea' will be towing streamers of about 25 meters within and at the periphery of AS-B location:

Center as-BD 26-38.27N 051-56.98E

Corner 1 26-38.46N 051-56.85E

Corner 2 26-37.95N 051-56.45E

Corner 3 26-37.61N 051-56.99E

Corner 4 26-38.12N 051-57.39E

Mariners are requested to navigate with caution and give wide berth. Cancel Navarea IX warning 361 of 2021

405/21. ARABIAN SEA. Pakistan. Charts Pak 33, 57 (INT 751), 58 (INT 7019), BA 38 and 707. Naval Ships will carry out surface, anti aircraft and depth charge live firing practice between 0400 to 1700 UTC from 01-05, 08-12, 15-19, 22-26 and 29-30 Nov 2021 in following areas:

a.

24-19.00N 066-58.00E

24-00.00N 066-39.00E

24-11.00N 066-27.00E

24-24.30N 066-42.00E

b.

24-36.02N 063-15.03E

24-36.02N 062-30.03E

24-21.02N 062-30.03E

24-21.02N 063-15.03E

c.

24-36.02N 062-30.03E

24-36.02N 061-45.03E

24-21.02N 061-45.03E

24-21.02N 062-30.03E

d. Depth charge firing area

24-16.18N 066-20.50E
 24-22.00N 066-27.00E
 24-16.30N 066-33.00E
 24-10.30N 066-27.00E

Ships and craft are to keep well clear of assigned danger area on above specified schedule. Cancel this message on 301800 UTC Nov 2021.

406/21. Self Cancelling. Navigational Warnings Inforce:

2020 series: 004, 150, 266, 336 and 350
 2021 series: 024, 086, 088, 109, 152, 176, 206, 223, 224, 238, 251, 265, 266, 292, 299, 305, 307, 321, 323, 335, 336, 340, 358, 363, 364, 368, 371, 372, 373, 374, 377, 379, 381, 382, 391, 397, 398, 399, 400, 401, 402, 404 and 405

COASTAL WARNING

117/21. ARABIAN SEA. Pakistan. Charts Pak 33, 57 (INT 751), 58 (INT 7019), BA 38 and 707. Naval Ships will carry out surface, anti aircraft and depth charge live firing practice between 0400 to 1700 UTC from 01-05, 08-12, 15-19, 22-26 and 29-30 Nov 2021 in following areas:

a.

24-19.00N 066-58.00E
 24-00.00N 066-39.00E
 24-11.00N 066-27.00E
 24-24.30N 066-42.00E

b.

24-36.02N 063-15.03E
 24-36.02N 062-30.03E
 24-21.02N 062-30.03E
 24-21.02N 063-15.03E

c.

24-36.02N 062-30.03E
 24-36.02N 061-45.03E
 24-21.02N 061-45.03E
 24-21.02N 062-30.03E

d. depth charge firing area

24-16.18N 066-20.50E
 24-22.00N 066-27.00E
 24-16.30N 066-33.00E
 24-10.30N 066-27.00E

Ships and craft are to keep well clear of assigned danger area on above specified schedule. Cancel this message on 301800 UTC Nov 2021.

118/21. SELF CANCELLING. Navigational Warnings Inforce:

2020 Series: 110 and 143.
 2021 Series: 089, 094, 095, 096, 105, 110 and 117.

WPGs Inforced 2021: 51
 WPGs Cancelled 2021: 50

TEMPORARY AND PRELIMINARY NOTICES

In Force 22 October 2021

(Former In Force List dated 24 September 2021 is cancelled)

Inforce: 55(T)/13, 92(T)/13, 92(T)/14, 51(T)/16, 136(P)/16, 150(P)/16, 173(P)/16, 83(P)/17, 99(T)/17, 115(P)/17, 129(P)/17, 140(T)/17, 169(T)/17, 176(T)/17, 184(P)/17, 57(T)/18, 101(T)/18, 131(P)/18, 173(P)/18, 27(P)/19, 55(P)/19, 65(P)/19, 73(T)/19, 78(T)/19, 108(P)/19, 110(P)/19, 112(P)/19, 173(T)/19, 202(T)/19, 208(P)/19, 213(T)/19, 229(T)/19, 234(P)/19, 04(P)/20, 58(T)/20, 65(T)/20, 74(P)/20, 87(T)/20, 95(P)/20, 111(P)/20, 122(P)/20, 134(P)/20, 135(T)/20, 139(P)/20, 140(P)/20, 160(T)/20, 176(P)/20, 191(P)/20, 04(T)/21, 06(T)/21, 13(T)/21, 15(T)/21, 24(T)/21, 42(P)/21, 46(T)/21, 56(P)/21, 61(T)/21, 63(P)/21, 69(T)/21, 70(T)/21, 95(P)/21, 98(P)/21, 109(P)/21, 110(T)/21, 111(T)/21, 118(T)/21, 122(P)/21, 123(P)/21, 124(T)/21, 125(P)/21 and 130(P)/21

Cancelled: 188(T)/18 and 122(P)/20

PART – III

CORRECTIONS TO SAILING DIRECTIONS

Nil

PART – IV

MARINE INFORMATION

OMAN

STRAIT OF HURMUZ

A cargo ship ‘Martin 1’ sunk in position 26-36.4N, 056-31.1E, General depth 70 meter. Mariners are requested to navigate with extreme caution.

Charts BA 2851, 2888, 3172 and 3173

Source: Navarea IX warning No. 206/21

OMAN

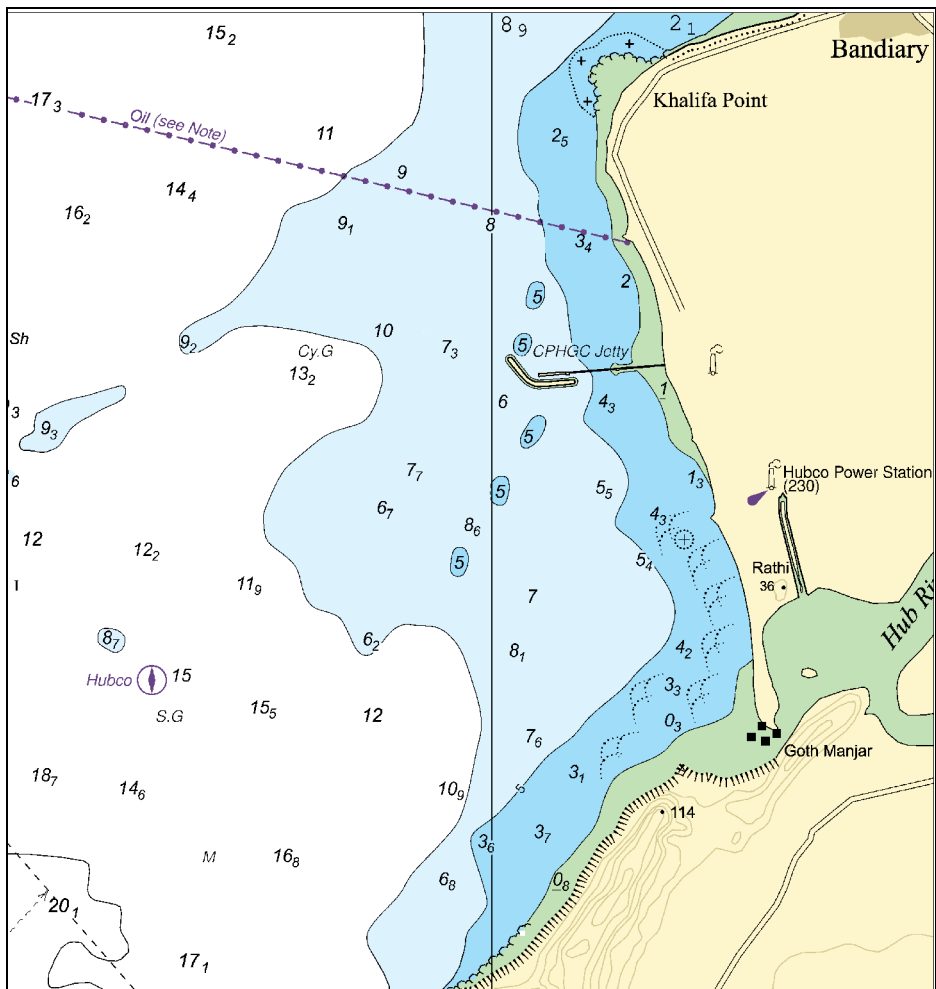
RAS ALMADRAKAH

A cargo vessel ‘Pioneer Star’ sunk in position 18-20N, 057-20E, approximately 47 NM south of Ras Al Madrasah. General depth 100 meter. Mariners are requested to navigate with caution.

Charts BA 3785 and 4705

Source: Navarea IX warning No. 238/21

To accompany Pakistan Notice to Mariners 130/21.



Block for PAK Chart No 5

NP77, Vol D Edition 2021. Weekly Edition No. 43, Dated 28 October 2021.
 Last Updates: Weekly Edition No. 42, dated 21 October 2021.

D1096-1	- Banc de Guérande	47 09-27 N 2 32-34 W	Fl Y 2-5s Pile	..
*	*	*	*	*	*
D1096-15	- Banc de Guérande	47 09-61 N 2 34-22 W	Fl Y 2-5s Pile	..
*	*	*	*	*	*
D1096-2	- Banc de Guérande	47 09-65 N 2 31-64 W	Fl Y 2-5s Pile	..
*	*	*	*	*	*
D1096-4	- Banc de Guérande	47 09-81 N 2 32-63 W	Fl Y 2-5s Pile	..
*	*	*	*	*	*
D1096-75	- Banc de Guérande	47 10-54 N 2 33-53 W	Fl Y 2-5s Pile	..
*	*	*	*	*	*
D1104 FR. LA. 51100	- Le Grand Charpentier	47 12-83 N 2 19-14 W	Q WRG	22 W14 Grey tower, green R10 lantern G10 27	G020°-054°(34°), W054°-062°(8°), R062°-092°(30°), W092°-111°(19°), R111°-310°(199°), W310°-020°(70°)
*	*	*	*	*	*
D1150 FR. LA. 51250 FR. LA. 52540	WEST COAST. BAIE DE BOURGNEUF - Pointe de Saint-Gildas	47 08-02 N 2 14-75 W	Q WRG	20 W14 Column on white R10 house, green top G10 17	R264°-308°(44°), G308°-078°(130°), W078°-085°(7°), R085°-174°(89°), W174°-180°(6°), G180°-264°(84°)
*	*	*	*	*	*
D1286 FR. LA. 57690	- Port de La Cotinière. Grande Jetée. Elbow	45 54-81 N 1 19-70 W	Fl(3)R 12s	11 3 White tower, red top 11	Unintens 133°-218°(85°)
			*	*	
D1735-1 ES. I. 03788	- Camelle. Breakwater. Head	43 11-34 N 9 05-19 W	Fl(3)G 9s	12 3 Green round tower 8	<i>fl 0-5, ec 1-5</i> x 2, <i>fl 0-5, ec 4-5.</i> TE 2021
					*
D2038-9	WEST COAST. PORTO DE LEIXÕES Remove from list; deleted				
D2640-6 PT. I. 704-1	- Porto da Povoação. W Mole. Head	37 44-71 N 25 14-81 W	Oc R 4s	6 3 White tower, red bands	<i>ec 1-5</i>
					*
D2642-4 PT. I. 707-5	- Vila Franco do Campo. Marina. Molhe de Abrigo. Pier. Head	37 42-79 N 25 25-71 W	Fl R 4s	11 9 White column, red bands 7	<i>fl 1.</i> Range 3M (T) 2021
					*
D2944-5 PT. III. 2034	- Salamanca	16 54-58 N 24 56-16 W	Fl(2)WRG 6s	8 5 Metal tower 5	..
					*