



PAKISTAN NOTICES TO MARINERS

WEEKLY EDITION 27

Notice: 81 - 82/21

10 JUL 2021

Copies of these Notices can be obtained gratis from Mercantile Marine Department and PN Chart Depot / NAVAREA IX Headquarters, 11 Liaquat Barracks Karachi. The same can be downloaded from web: www.paknavy.gov.pk/hydro.

CONTENTS

- I NOTICES TO MARINERS
- II REPRINTS OF RADIO NAVIGATIONAL WARNINGS
- III CORRECTIONS TO SAILING DIRECTIONS
- IV MARINE INFORMATION

Mariners are requested to inform the Hydrographic Department, Naval Headquarters, 11 Liaquat Barracks, Karachi, Pakistan, immediately on the discovery of new dangers, or suspected dangers to navigation and of changes or defects in aids to navigation noticed in NAVAREA IX and of shortcomings in PAK charts or publications.

Tel : + 92-21-48506151
+ 92-21-48506152
Fax : + 92-21-99201623
+ 92-21-35867737

E-mail : hydropk@paknavy.gov.pk
hydropk@gmail.com

Web : www.paknavy.gov.pk/hydro.

MUHAMMAD KHALID
Commodore
Hydrographer

Hydrographic Department, Naval Headquarters, 11 Liaquat Barracks, Karachi 75530, PAKISTAN

PART – I
NOTICES TO MARINERS

81*/21 UNITED ARAB EMIRATES - Berth.

BA Chart 3778 [*previous update 998/21*] WGS84 DATUM

Delete berth number, 4 24° 08′.32N., 52° 45′.44E.

Source: Admiralty Notice to Mariners No. 2698*/2021.

82/21 PAKISTAN - NM Block.

BA Chart 38 (INT 7019) (Panel C, Ormāra) [*previous update 1874/21*] WGS84 DATUM

Insert the accompanying block, centred on: 25° 12′.6N., 64° 41′.0E.

Source: Admiralty Notice to Mariners No. 2681/2021.

PART – II
RADIO NAVIGATIONAL WARNINGS

257/21. SOUTHERN GULF. UAE. Charts BA 2444, 3178 and 3179. T.M.B No.2 off Zirku island has submerged at approximate position 25-02.35N, 053-00.54E. Mariners are requested to navigate with caution.

258/21. SOUTHERN GULF. UAE. Charts BA 2837, 2858 and 2889. Seismic survey in progress till 11 Jul 2021 in area bounded by:

Crew 252 Area:

Shooting Area

25-13.41N 054-29.44E

25-13.28N 054-32.40E

25-10.05N 054-32.27E

25-10.09N 054-29.32E

25-12.64N 054-33.80E

25-11.11N 054-35.58E

25-09.97N 054-35.48E

25-09.99N 054-33.59E

25-04.52N 054-42.62E

24-59.16N 054-48.58E

24-56.21N 054-45.22E

24-56.34N 054-42.34E

Node Spread Area

25-18.24N 054-26.27E

25-18.23N 054-27.66E

25-13.29N 054-33.00E

25-13.48N 054-26.17E

Crew 253 Area:

Source Operation Area

24-39.15N 053-16.15E

24-38.96N 053-28.56E

24-31.51N 053-28.42E

24-31.56N 053-25.44E

24-34.22N 053-25.49E

24-37.68N 053-21.05E

24-37.75N 053-16.13E

Receiver Operation Area

24-43.22N 053-18.67E

24-43.10N 053-26.20E

24-32.51N 053-25.99E

24-37.68N 053-21.05E

24-37.72N 053-18.56E

Crew 254 Area:

Source Operation Area

24-34.54N 053-55.46E

24-34.44N 054-00.44E

24-23.10N 053-59.99E

24-23.19E 053-55.20E

Cable Operation Area
24-31.38N 053-51.23E
24-31.14N 054-03.66E
24-26.30N 054-03.54E
24-26.54N 053-51.12E

Mariners are advised to navigate with caution and to maintain a listening watch on channels 16/72 and 76. Cancel this message on 112359 UTC Jul 21.

259/21. SELF CANCELLING. Cancel Navarea IX warning 219 of 2020.

260/21. GULF OF OMAN. Iran. Charts BA 2837, 2851, 2858 and 2888. SPM buoys and west cardinal buoys established:

- a. SPM No 1 25-50.75N 057-14.54E
- b. SPM No 2 25-53.14N 057-13.35E

West Cardinal Lightbuoy

25-57.66N 057-10.41E Q(9)15 seconds

Mariners cautioned.

261/21. SELF CANCELLING. Navarea IX Warnings inforce:

- 2019 Series: 126, 146, 381 and 393.
- 2020 Series: 004, 018, 035, 078, 150, 178, 209, 215, 222, 238, 266, 336, 350, 379, 387, 394, 406, 408, 409, 449 and 451.
- 2021 Series: 024, 084, 086, 088, 109, 152, 176, 182, 202, 203, 206, 212, 221, 223, 224, 227, 234, 238, 241, 245, 248, 249, 250, 251, 254, 257, 258 and 260.

COASTAL WARNING

070/21. SELF CANCELLING. Navigational Warnings Inforce:

- 2019 Series: 111 and 113.
- 2020 Series: 057, 065, 110, 125, 133 and 143.
- 2021 Series: 067.

WPGs Inforced 2021: 32

WPGs Cancelled 2021: 33

PART – III

CORRECTIONS TO SAILING DIRECTIONS

NP38 West Coast of India Pilot (2019 Edition)

**India - North-west coast - Mumbai Approaches
to Tārāpur Point — Directions; wreck**

232

Paragraph 8.19 3 line(s) 5-6 *Replace by:*

E of a dangerous wreck (19°13'·52N 72°24'·95E),
thence:

Indian Notice 9/108/21

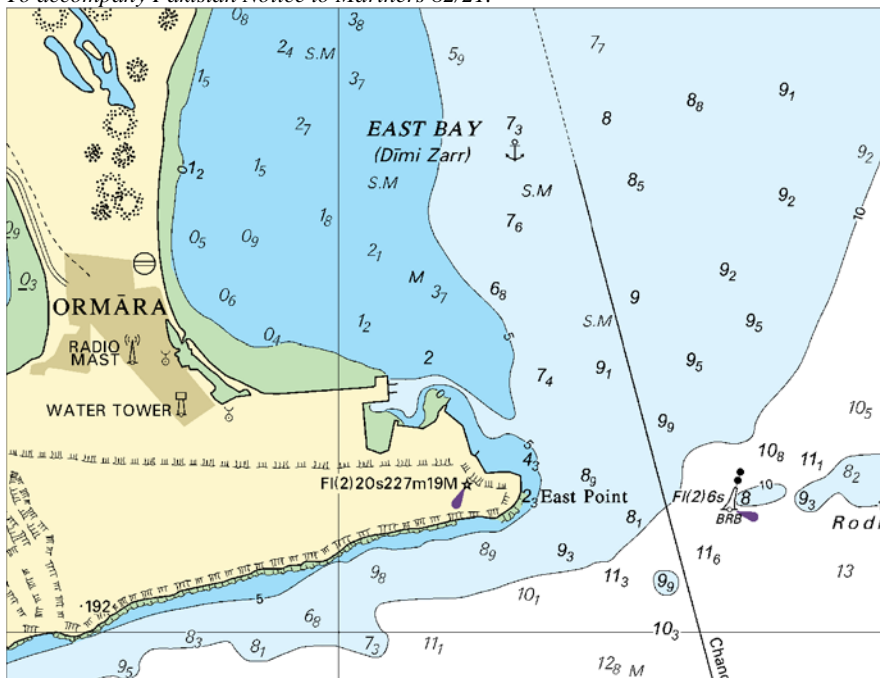
[NP38-No 47-Wk 27/21]

PART – IV

MARINE INFORMATION

Nil

To accompany Pakistan Notice to Mariners 82/21.



Block for BA Chart No 38

NP77, Vol D Edition 2021. Weekly Edition No. 27, Dated 08 July 2021.
 Last Updates: Weekly Edition No. 26, dated 01 July 2021.

D1524-5 ES, I, 00703-55	- Dique de Zierbena. Central Wharf. W Corner	43 21-02 N 3 03-69 W	Fl Y 3s	11	4 Yellow × on yellow post	fl 0-5 *
D2037-8 PT, I, 78	- Canal Interior. W Side. No 2	41 10-77 N 8 42-51 W	Fl(3)R 8s	3	2-5 Red beacon	(fl 0-5, ec 1) x 2, fl 0-5, ec 4-5. TE 2021 *
D2153-8 PT, I, 388	- Dolphin	38 30-70 N 8 52-02 W	Q(3)W 5s	7 *	3 Grey post 3	(fl 0-2, ec 0-8) x 2, fl 0-2, ec 2-8
D2197-3 PT, I, 492	- Marina de Vilamoura. W Mole. Head	37 04-17 N 8 07-46 W	Fl R 4s	13	5 White tower, red bands 6	fl 1 *
D2690-3 PT, I, 821-25	- Lajes Do Pico. Quay	38 23-86 N 28 15-33 W	VQ(6)+LFl W 10s ∇ on black beacon, yellow top 2	(fl 0-25, ec 0-25) x 6, fl 2, ec 5 *
D7083-96 FR, LC, 43520	Port Raiatea. Sainte Marie. E Breakwater. Ldg Lts 147°. Front (FR)	20 53-59 S 55 32-29 E	Q W	7	4 White square post	W142-5°-151-5°(9°) *
D7083-961 FR, LC, 43521	Port Raiatea. Sainte Marie. E Breakwater. Ldg Lts 147°. Rear. 10m from front (FR)	20 53-60 S 55 32-29 E	Q W	9	4 White round post	W142-5°-151-5°(9°) *
D7367-805 *	FASHT AL BAZAM - Al Fiyay. AF16	24 17-06 N 53 12-65 E	Fl R 5s *	.. *	.. Red □ on red metal post *	.. *
D7367-806 *	- Al Fiyay. AF15	24 17-06 N 53 12-58 E	Fl G 5s *	.. *	.. Green △ on green metal post *	.. *
D7371-4	- SBM. Berth No 3 - - -	24 12-14 N 52 41-39 E ..	Mo(U)W 15s Horn Mo(U) 30s	3 Superbuoy *