



PAKISTAN NOTICES TO MARINERS

WEEKLY EDITION 20

Notice: 66 –70(T)/21

22 MAY 2021

Copies of these Notices can be obtained gratis from Mercantile Marine Department and PN Chart Depot / NAVAREA IX Headquarters, 11 Liaquat Barracks Karachi. The same can be downloaded from web: www.paknavy.gov.pk/hydro.

CONTENTS

- I NOTICES TO MARINERS
- II REPRINTS OF RADIO NAVIGATIONAL WARNINGS
- III CORRECTIONS TO SAILING DIRECTIONS
- IV MARINE INFORMATION

Mariners are requested to inform the Hydrographic Department, Naval Headquarters, 11 Liaquat Barracks, Karachi, Pakistan, immediately on the discovery of new dangers, or suspected dangers to navigation and of changes or defects in aids to navigation noticed in NAVAREA IX and of shortcomings in PAK charts or publications.

Tel : + 92-21-48506151
+ 92-21-48506152
Fax : + 92-21-99201623
+ 92-21-35867737

E-mail : hydropk@paknavy.gov.pk
hydropk@gmail.com

Web : www.paknavy.gov.pk/hydro.

MUHAMMAD KHALID
Commodore
Hydrographer

Hydrographic Department, Naval Headquarters, 11 Liaquat Barracks, Karachi 75530, PAKISTAN

PART – I
NOTICES TO MARINERS

66/21 PAKISTAN - Ormara - NM Block.

Chart PAK-24 [*previous update New Edition 25/12/2020*] WGS84 DATUM



Insert the accompanying block, centred on: 25° 11'·00N., 64° 46'·25E.

Source: Pakistan Navy Hydrographic Department.



67*/21 UNITED ARAB EMIRATES - Buoyage.

Note: Former Notices 1503(T)/20 (PAK Notic 38(T)/20), 2505(T)/20 (PAK Notice 80(T)/20), 3675(T)/20 (PAK Notice 114(T)/20) and 4518(T)/20 (PAK Notice 136(T)/20) are cancelled.



BA Chart 2889 (INT 7211) [*previous update 1880/21*] WGS84 DATUM

Replace  Fl(3) JBD 05A with  Q(6)+LFl JBD-05A 24° 36'·8N., 52° 35'·8E.

BA Chart 3179 (INT 7229) [*previous update 1778/21*] WGS84 DATUM

Replace  Q(3)10s JBD 05A with  Q(6)+LFl.15s JBD-05A 24° 36'·80N., 52° 35'·76E.

BA Chart 3951 (INT 7241) [*previous update 181/21*] WGS84 DATUM

Replace  Q(3)10s JBD 05A with  Q(6)+LFl.15s JBD-05A 24° 36'·80N., 52° 35'·76E.

Source: Admiralty Notice to Mariners No. 2021*/2021.

68/21 OMAN - Breakwater.

BA Chart 3518 (Panel E, Oman LNG and OMIFCO Terminals) [*previous update 2623/20*] WGS84 DATUM

Insert breakwater, single firm line, joining: 22° 39'·25N., 59° 25'·49E.
22° 39'·36N., 59° 25'·59E.

Source: Admiralty Notice to Mariners No. 2026/2021.

69(T)/21 KUWAIT - Lights.

1. The MET Tower and associated light, Fl(4)15s6m5M, in position 28° 46'·00N., 48° 26'·10E. have been damaged.
2. A new light, Q.W, has been temporarily established in position 28° 46'·00N., 48° 26'·10E. on the remains of the damaged tower.
3. Mariners are advised to navigate with caution in the area.
4. Former Notice 3896(T)/19 (PAK Notice 136(T)/19) is cancelled.
(WGS84 DATUM)

BA Charts affected - 1223 - 2882 (INT 7264) - 2884 (INT 7278) - 3773

Source: Admiralty Notice to Mariners No. 2031(T)/2021.

70(T)/21 UNITED ARAB EMIRATES - Breakwaters.

1. Breakwaters have been reported to submerge at high tide, joining the following positions:

- 25° 11'·64N., 55° 08'·09E.
- 25° 11'·28N., 55° 08'·33E.
- 25° 11'·09N., 55° 09'·00E.
- 25° 11'·15N., 55° 09'·90E.
- and
- 25° 11'·26N., 55° 10'·18E.
- 25° 11'·35N., 55° 10'·48E.
- 25° 11'·62N., 55° 11'·01E.
- 25° 11'·79N., 55° 11'·18E.
- and
- 25° 11'·99N., 55° 11'·31E.
- 25° 12'·20N., 55° 11'·60E.
- 25° 12'·69N., 55° 11'·94E.
- 25° 13'·41N., 55° 12'·25E.
- 25° 13'·63N., 55° 12'·25E.

2. Mariners are advised to navigate with caution in the area and consult the local port authorities for the latest information.
(WGS84 DATUM)

BA Charts affected - 3175 (INT 7212) - 3176 (INT 7216) - 3412 (INT 7219) - 3739 (INT 7220) - 8054

Source: Admiralty Notice to Mariners No. 2070(T)/2021.

PART – II
RADIO NAVIGATIONAL WARNINGS

198/21. CENTRAL GULF. Qatar. Charts BA 2523, 2837 and 2886. ‘Al Jassra’ rig is moving by vessels ‘Lanpan 30’, ‘AOS Triumph’ and ‘AOS Emerald’ from its current position 26-37.05N, 052-02.76E to 25-52.22N, 051-39.97E. Mariners are requested to navigate with caution and give wide berth. Cancel this message on 182359 may 2021.

199/21. CENTRAL GULF. Qatar. Charts BA 2523, 2837 and 2886. ‘Energy Enticer’ rig is moving by vessels ‘Ahts Warrior’, ‘Lanpan 31’ and ‘Lanpan 32’ from its current position 26-27.08N, 052-12.54E to 25-57.35N, 052-01.69E. Mariners are requested to navigate with caution and give wide berth. Cancel this message on 182359 May 2021.

200/21. PAKISTAN. Approaches to Karachi. Charts PAK 5 (INT 7314), 33, 57 (INT 751), BA 39 and 58. Firing practice with live ammunition will be carried out between 0300-1200 utc on 20 and 21 may 21 in area bounded by following coordinates:

24-48.40N 066-57.37E
24-48.40N 066-49.60E
24-45.40N 066-49.84E
24-42.23N 066-53.07E
24-47.43N 066-58.77E

Ships and craft are to keep well clear of assigned danger area on above specified schedule. Cancel this message on 211300 UTC May 2021

201/21. SOUTHERN GULF. UAE. Charts BA 2837, 2858 and 2889. Seismic survey in progress from 17 to 23 May 2021 in area bounded by:

Crew 209 Area:
24-14.32N 052-04.30E
24-14.29N 052-07.40E
24-16.32N 052-07.42E
24-16.26N 052-14.22E
24-10.72N 052-14.16E
24-10.77N 052-07.37E
24-12.79N 052-07.39E
24-12.82N 052-04.29E

Crew 253 Area:
Source Operation Area
24-51.92N 053-10.92E
24-51.72N 053-19.92E
24-46.70N 053-23.36E
24-46.91N 053-10.81E

Receiver Operation Area
24-55.92N 053-13.47E
24-55.81N 053-21.08E
24-42.65N 053-20.86E
24-42.77N 053-13.26E

Crew 254 Area:
Source Operation Area
24-39.74N 053-37.59E
24-39.61N 053-45.19E
24-28.25N 053-44.94E
24-28.29N 053-37.35E

Cable Operation Area
24-36.57N 053-34.13E
24-36.31N 053-48.87E
24-31.43N 053-48.76E
24-31.70N 053-34.02E

Mariners are advised to navigate with caution and to maintain a listening watch on channels 16/72 and 76. Cancel this message on 232359 UTC May 21.

- 202/21. CENTRAL GULF.** Qatar. Charts BA 2523, 2837, 2858 and 2886. 'Hakuryu 12' rig will be located at appraisal well 'AP-43' in position 26-35.09N, 051-48.96E till 17 Aug 21. Mariners are requested to navigate with caution and give wide berth. Cancel Navarea IX warning 196 of 2021.
- 203/21. SOUTHERN GULF.** UAE. Charts BA 2837, 2889, 3179 and 3951. Dalma buoy in position 24-32.51N, 052-27.85E reported unlit. Mariners are requested to navigate with caution.
- 204/21. SELF CANCELLING.** Navarea IX Warnings inforce:
- 2019 Series: 126, 146, 381 and 393.
2020 Series: 004, 018, 035, 078, 150, 178, 209, 215, 222, 238, 266, 336, 350, 379, 384, 387, 394, 406, 408, 409, 449 and 451.
2021 Series: 024, 084, 086, 088, 109, 152, 173, 176, 178, 182, 188, 201, 202 and 203.

COASTAL WARNING

- 057/21. PAKISTAN.** Approaches to Karachi. Charts PAK 5 (INT 7314), 33, 57 (INT 751), BA 39 and 58. Firing practice with live ammunition will be carried out between 0300-1200 utc on 20 and 21 may 21 in area bounded by following coordinates:

24-48.40N 066-57.37E
24-48.40N 066-49.60E
24-45.40N 066-49.84E
24-42.23N 066-53.07E
24-47.43N 066-58.77E

Ships and craft are to keep well clear of assigned danger area on above specified schedule. Cancel this message on 211300 UTC May 2021

- 058/21. SELF CANCELLING.** Navigational Warnings Inforce:
- 2019 Series: 111 and 113.
2020 Series: 057, 065, 110, 125, 133 and 143.
2021 Series: 051

WPGs Inforced 2021: 26
WPGs cancelled 2021: 28

PART – III

CORRECTIONS TO SAILING DIRECTIONS

NP63 Persian Gulf Pilot (2021 Edition)

Iran – Jazīreh-ye Qeys — Directions; major light

126

Paragraph 6.12 3 line(s) 1-6 *Delete*

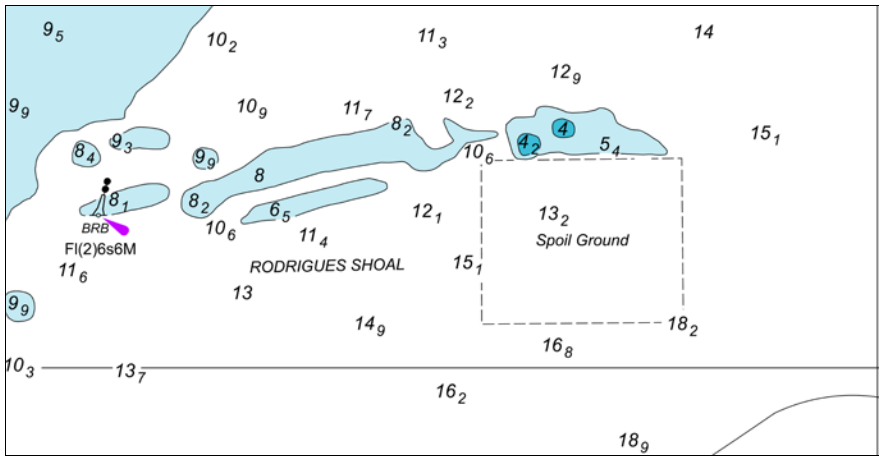
Corr. Iranian Ports & Maritime Organization (15/03/21)
[NP63-No 9-Wk 20/21]

PART – IV

MARINE INFORMATION

Nil

To accompany Pakistan Notice to Mariners 66/21



Block for Chart PAK-24

NP77. Vol D Edition 2020. Weekly Edition No. 20, Dated 20 May 2021.
 Last Updates: Weekly Edition No. 19, dated 13 May 2021.

D2349-13	- Faginado. No 2. Dir Lt	36 49.77 N	Iso W 4s	3	3	Red and white post	Vis 1.2° each side of bearing
ES. I. 09425	328°	6 21.39 W					
ES. I. 09426	- - -	..	Fl(2)R 7s	3	3	..	fl 0.5, ec 1.5, fl 0.5, ec 4.5
*	*	*	*	*	*	*	*
D3133-3	PORT D'ABIDJAN						
	- FAC. Dir Lt 312°	5 16.87 N	Dir WRG 6s	..	5	..	Oc(2) R314.5°-319.5°(5°).
		4 02.29 W					Oc(2) W309.5°-314.5°(5°).
*	*	*	*	*	*	*	Oc(2) G304.5°-309.5°(5°)
							*